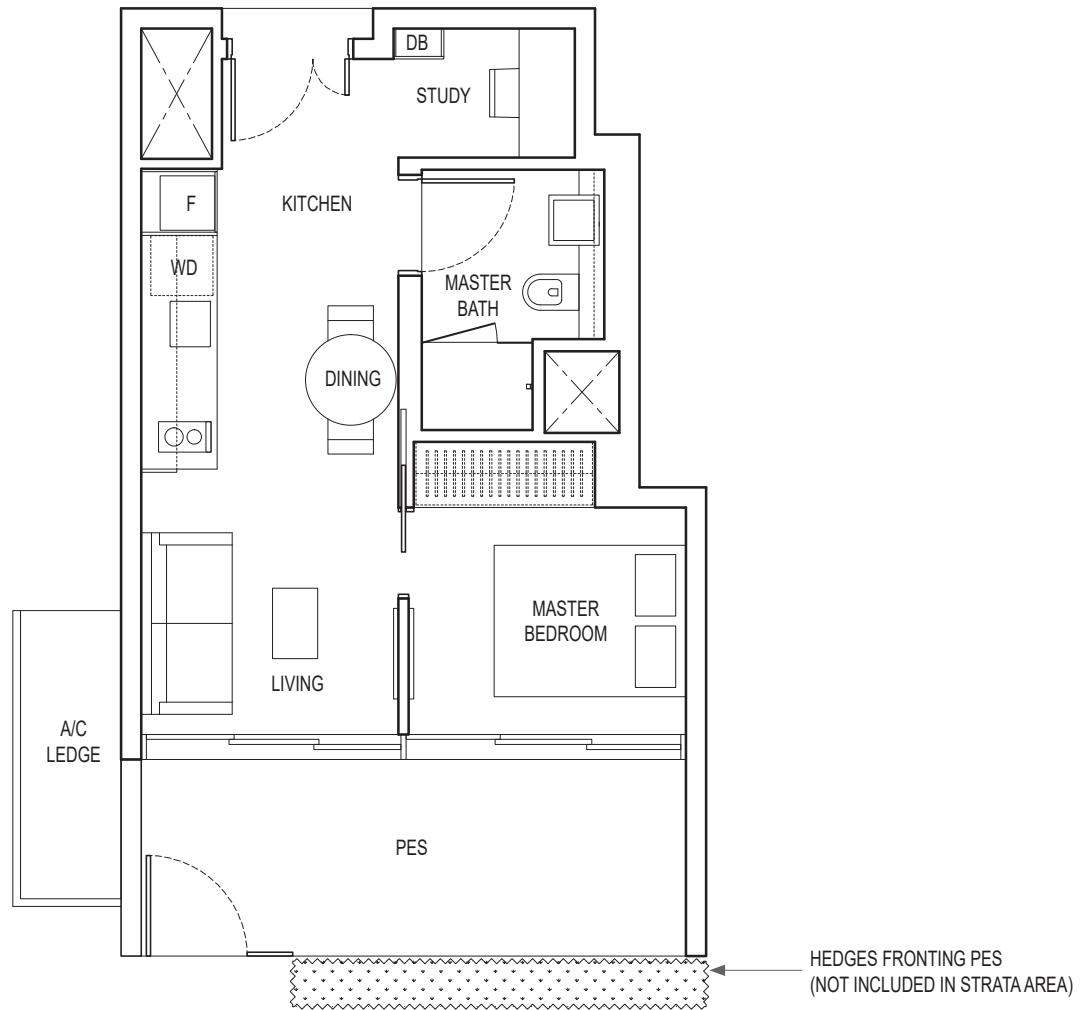


1-BEDROOM + STUDY

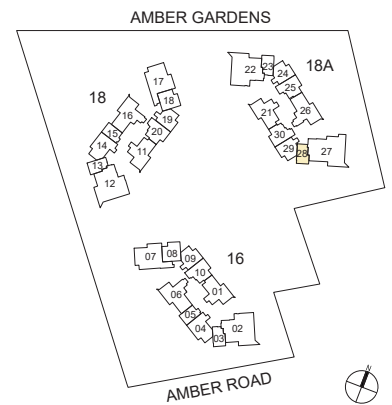
TYPE A1 PES

50 sq m / 538 sq ft

BLK 18A : #01-28



HEDGES FRONTING PES
(NOT INCLUDED IN STRATA AREA)



KEYPLAN IS NOT DRAWN TO SCALE

Area includes air-con (A/C) ledge, balcony and strata void area where applicable. Please refer to the key plan for orientation. The plans are subject to change as may be approved by relevant authorities. All floor plans are approximate measurements only and are subject to government re-survey. The balcony shall not be enclosed unless with the approved balcony screen.

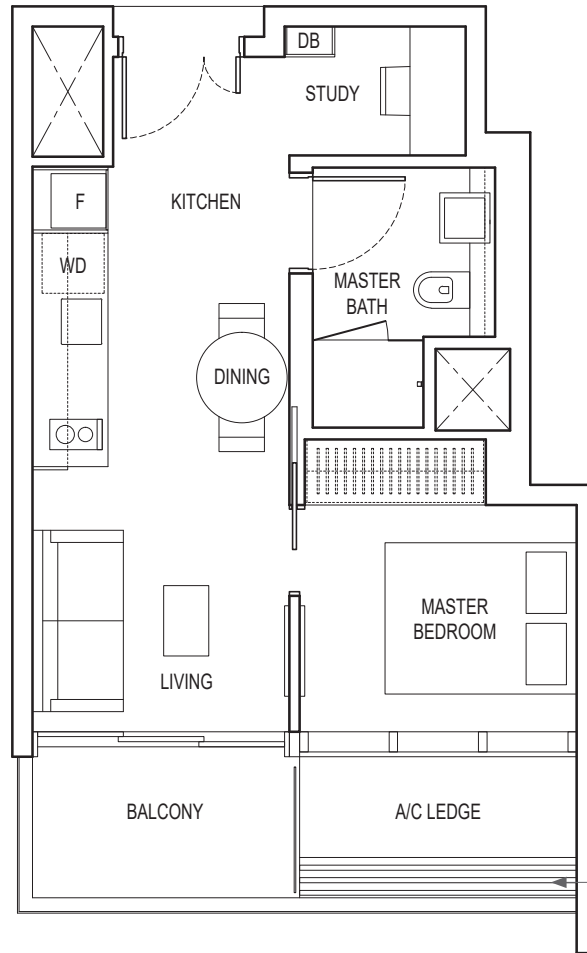
DB: Distribution Box SC: Shoe Cabinet ST: Storage WIW: Walk-in-Wardrobe / Closet WD: Integrated Washer Dryer
 W&D: Washer and Dryer F: Fridge WC: Water Closet PES: Private Enclosed Space

1-BEDROOM + STUDY

TYPE A1

43 sq m / 463 sq ft

BLK 18A : #02-28 to #19-28

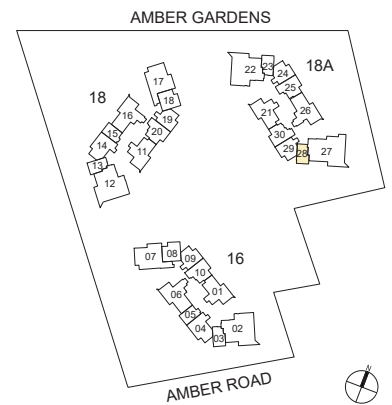


LIGHTWEIGHT ALUMINIUM TRELLIS FOR MAINTENANCE ACCESS ONLY (NOT INCLUDED IN STRATA AREA)



Area includes air-con (A/C) ledge, balcony and strata void area where applicable. Please refer to the key plan for orientation. The plans are subject to change as may be approved by relevant authorities. All floor plans are approximate measurements only and are subject to government re-survey. The balcony shall not be enclosed unless with the approved balcony screen.

DB: Distribution Box SC: Shoe Cabinet ST: Storage WIW: Walk-in-Wardrobe / Closet WD: Integrated Washer Dryer
 W&D: Washer and Dryer F: Fridge WC: Water Closet PES: Private Enclosed Space



KEYPLAN IS NOT DRAWN TO SCALE

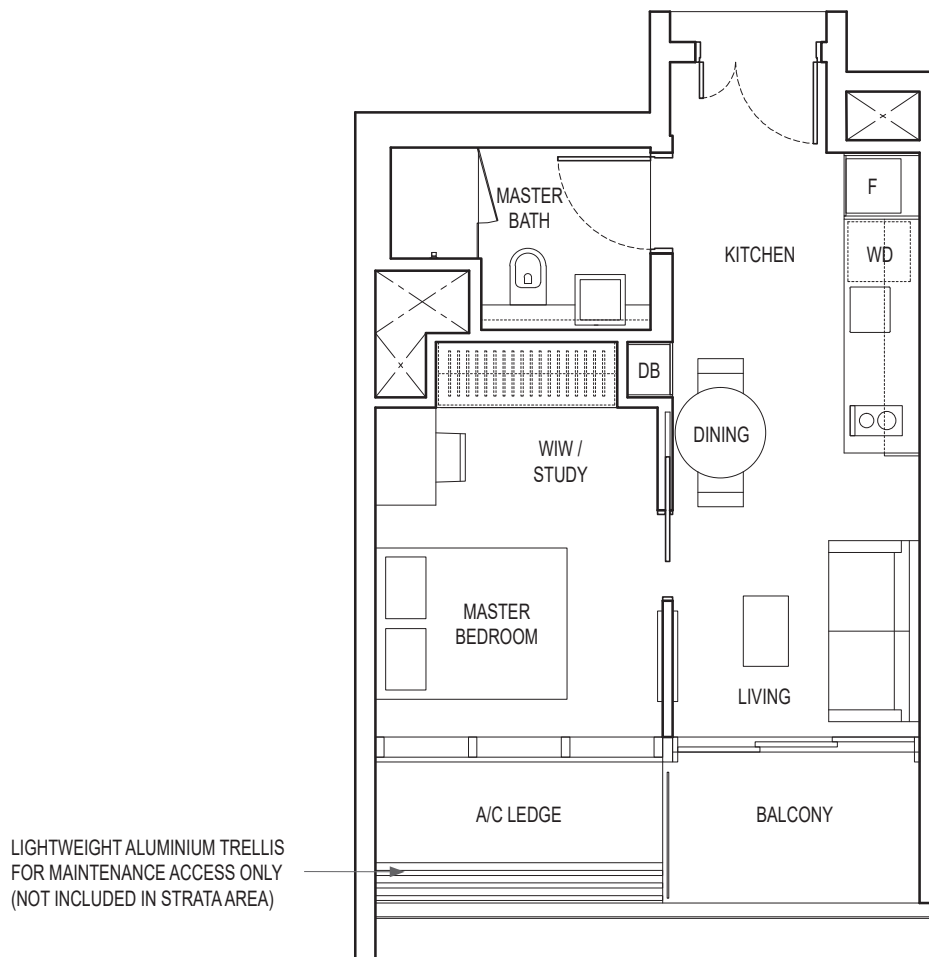
1-BEDROOM + ENSUITE STUDY

TYPE A2

43 sq m / 463 sq ft

BLK 16 : #03-05 to #21-05

BLK 18 : #03-15 to #21-15



Area includes air-con (A/C) ledge, balcony and strata void area where applicable. Please refer to the key plan for orientation. The plans are subject to change as may be approved by relevant authorities. All floor plans are approximate measurements only and are subject to government re-survey. The balcony shall not be enclosed unless with the approved balcony screen.

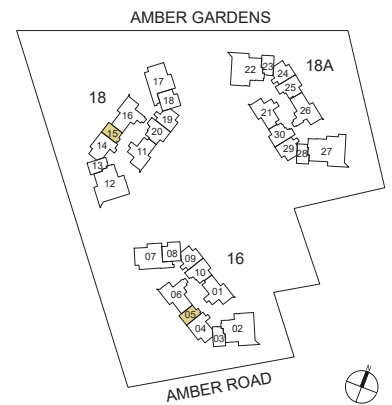
DB: Distribution Box
W&D: Washer and Dryer

SC: Shoe Cabinet
F: Fridge

ST: Storage
WC: Water Closet

WIW: Walk-in-Wardrobe / Closet
PES: Private Enclosed Space

WD: Integrated Washer Dryer



KEYPLAN IS NOT DRAWN TO SCALE

1-BEDROOM + ENSUITE STUDY

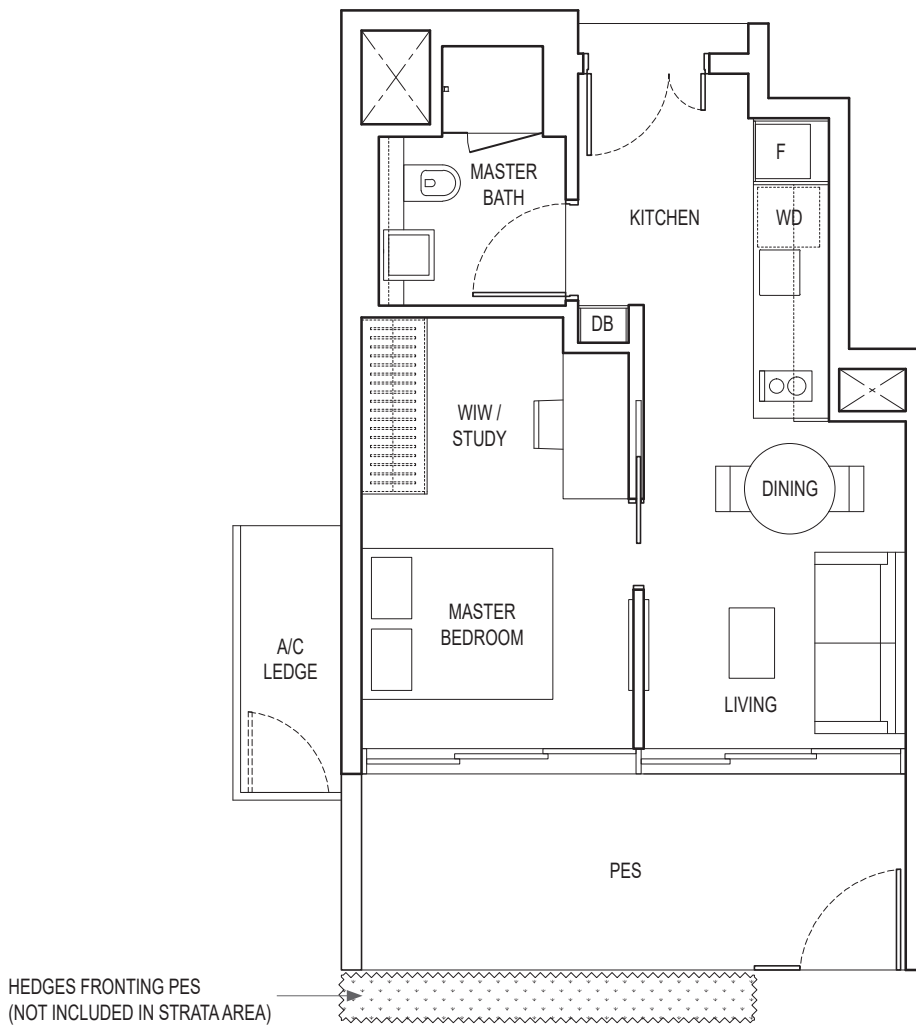
TYPE A3 PES

51 sq m / 549 sq ft

BLK 16 : #01-03

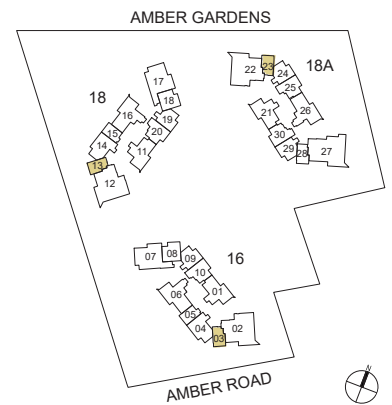
BLK 18 : #01-13

BLK 18A : #01-23



Area includes air-con (A/C) ledge, balcony and strata void area where applicable. Please refer to the key plan for orientation. The plans are subject to change as may be approved by relevant authorities. All floor plans are approximate measurements only and are subject to government re-survey. The balcony shall not be enclosed unless with the approved balcony screen.

DB: Distribution Box SC: Shoe Cabinet ST: Storage WIW: Walk-in-Wardrobe / Closet WD: Integrated Washer Dryer
 W&D: Washer and Dryer F: Fridge WC: Water Closet PES: Private Enclosed Space



KEYPLAN IS NOT DRAWN TO SCALE

1-BEDROOM + ENSUITE STUDY

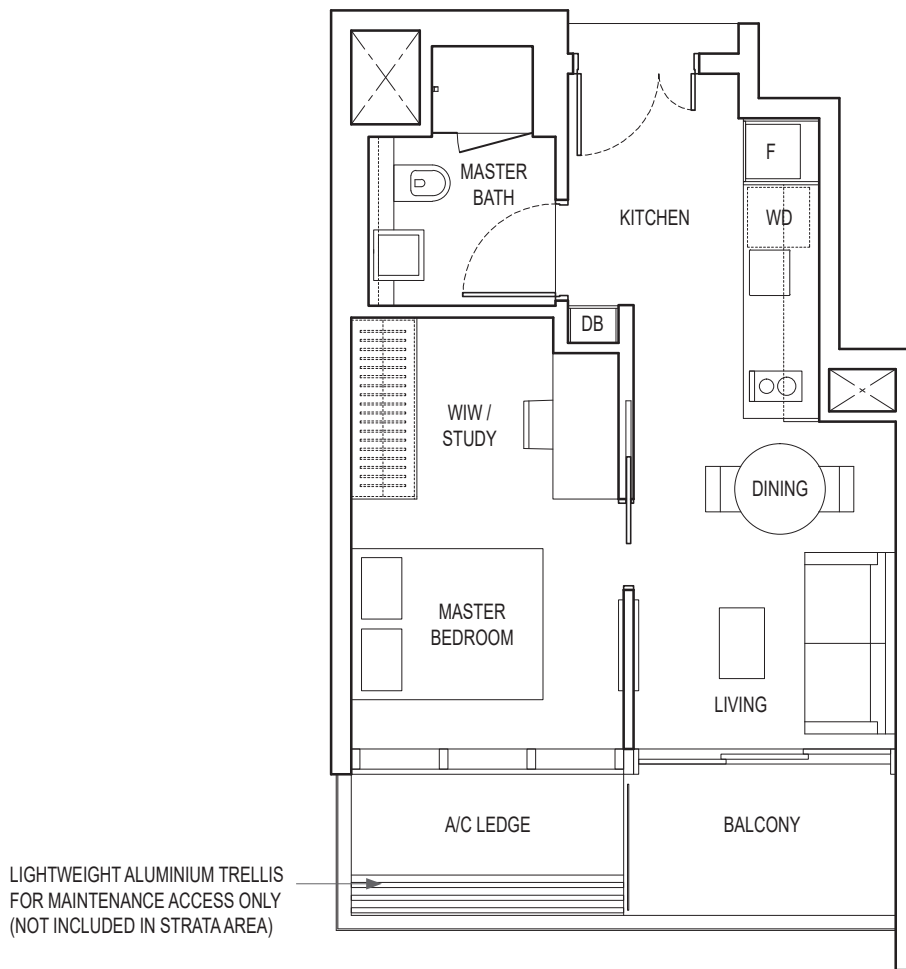
TYPE A3

45 sq m / 484 sq ft

BLK 16 : #02-03 to #19-03

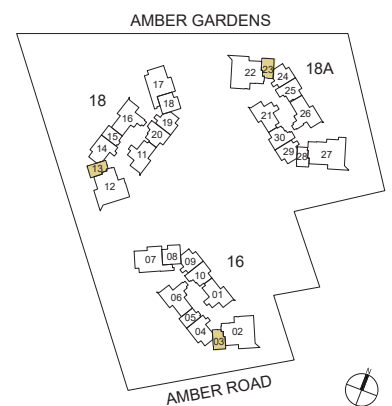
BLK 18 : #02-13 to #19-13

BLK 18A : #02-23 to #19-23



Area includes air-con (A/C) ledge, balcony and strata void area where applicable. Please refer to the key plan for orientation. The plans are subject to change as may be approved by relevant authorities. All floor plans are approximate measurements only and are subject to government re-survey. The balcony shall not be enclosed unless with the approved balcony screen.

DB: Distribution Box SC: Shoe Cabinet ST: Storage WIW: Walk-in-Wardrobe / Closet WD: Integrated Washer Dryer
 W&D: Washer and Dryer F: Fridge WC: Water Closet PES: Private Enclosed Space



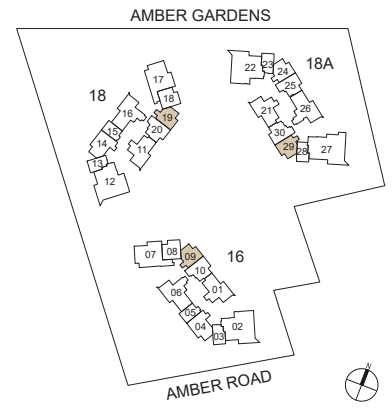
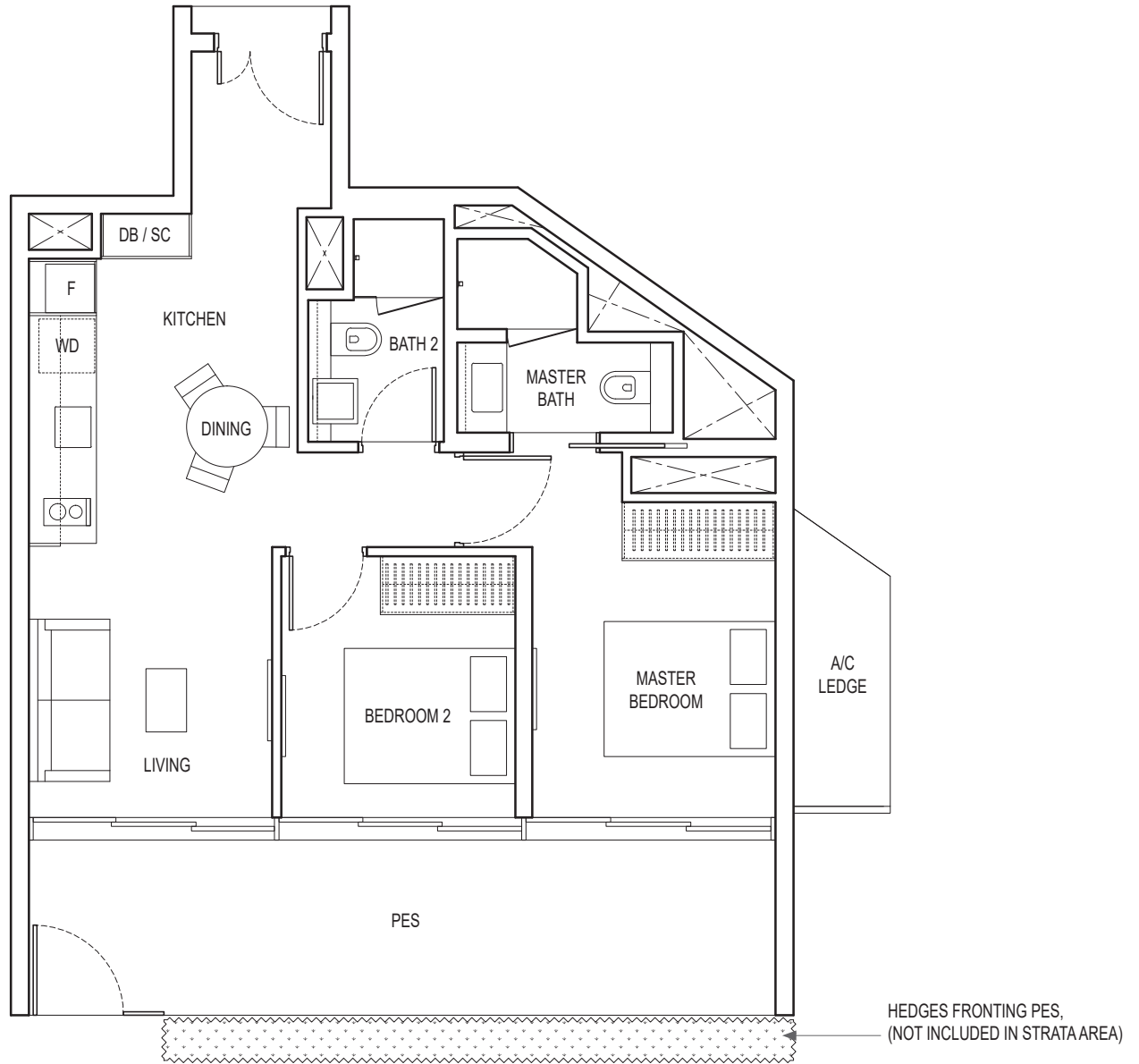
KEYPLAN IS NOT DRAWN TO SCALE

2-BEDROOM

TYPE B1 PES

77 sq m / 829 sq ft

BLK 16 : #01-09
 BLK 18 : #01-19
 BLK 18A : #01-29



Area includes air-con (A/C) ledge, balcony and strata void area where applicable. Please refer to the key plan for orientation. The plans are subject to change as may be approved by relevant authorities. All floor plans are approximate measurements only and are subject to government re-survey. The balcony shall not be enclosed unless with the approved balcony screen.

DB: Distribution Box SC: Shoe Cabinet ST: Storage WIW: Walk-in-Wardrobe / Closet WD: Integrated Washer Dryer
 W&D: Washer and Dryer F: Fridge WC: Water Closet PES: Private Enclosed Space

KEYPLAN IS NOT DRAWN TO SCALE

2-BEDROOM

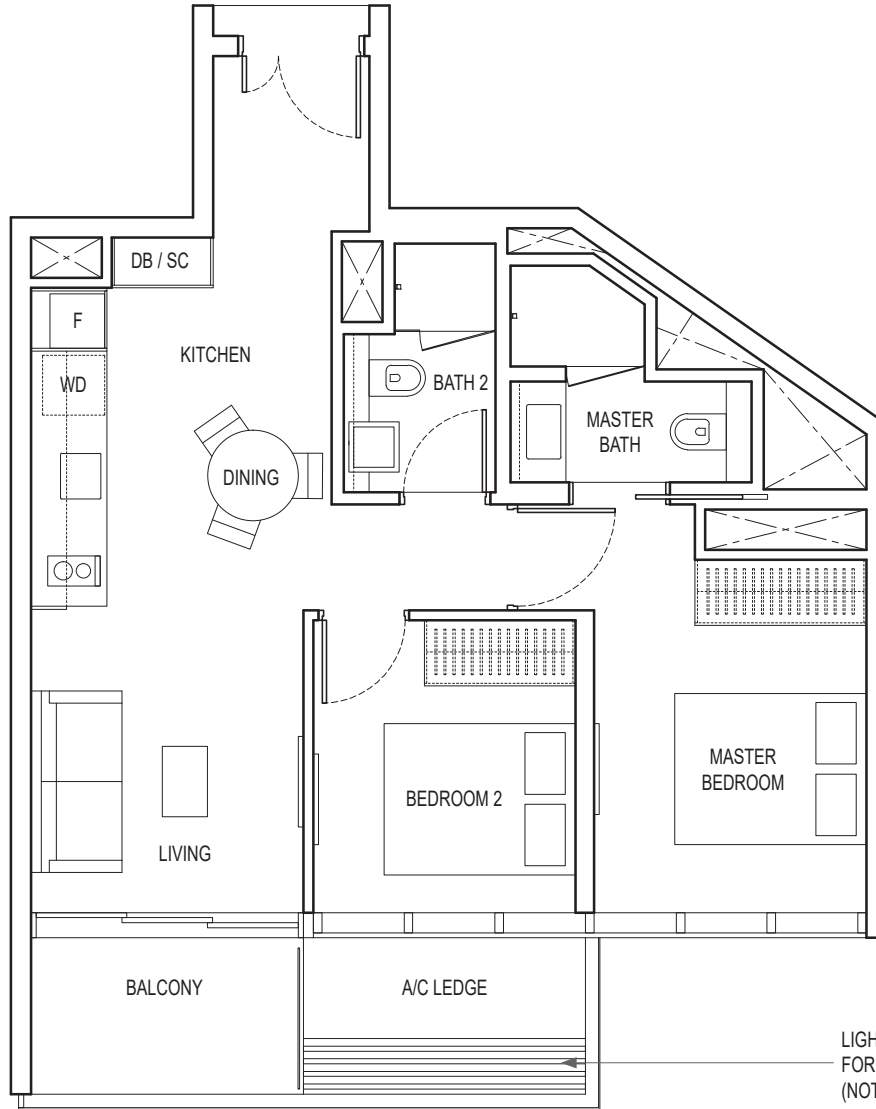
TYPE B1

65 sq m / 700 sq ft

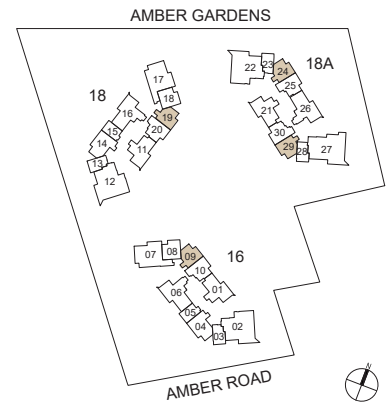
BLK 16 : #02-09 to #21-09

BLK 18 : #02-19 to #21-19

BLK 18A : #03-24 to #21-24, #02-29 to #21-29



LIGHTWEIGHT ALUMINIUM TRELLIS
FOR MAINTENANCE ACCESS ONLY
(NOT INCLUDED IN STRATA AREA)



KEYPLAN IS NOT DRAWN TO SCALE

Area includes air-con (A/C) ledge, balcony and strata void area where applicable. Please refer to the key plan for orientation. The plans are subject to change as may be approved by relevant authorities. All floor plans are approximate measurements only and are subject to government re-survey. The balcony shall not be enclosed unless with the approved balcony screen.

DB: Distribution Box
W&D: Washer and Dryer

SC: Shoe Cabinet
F: Fridge

ST: Storage
WC: Water Closet

WIW: Walk-in-Wardrobe / Closet
PES: Private Enclosed Space

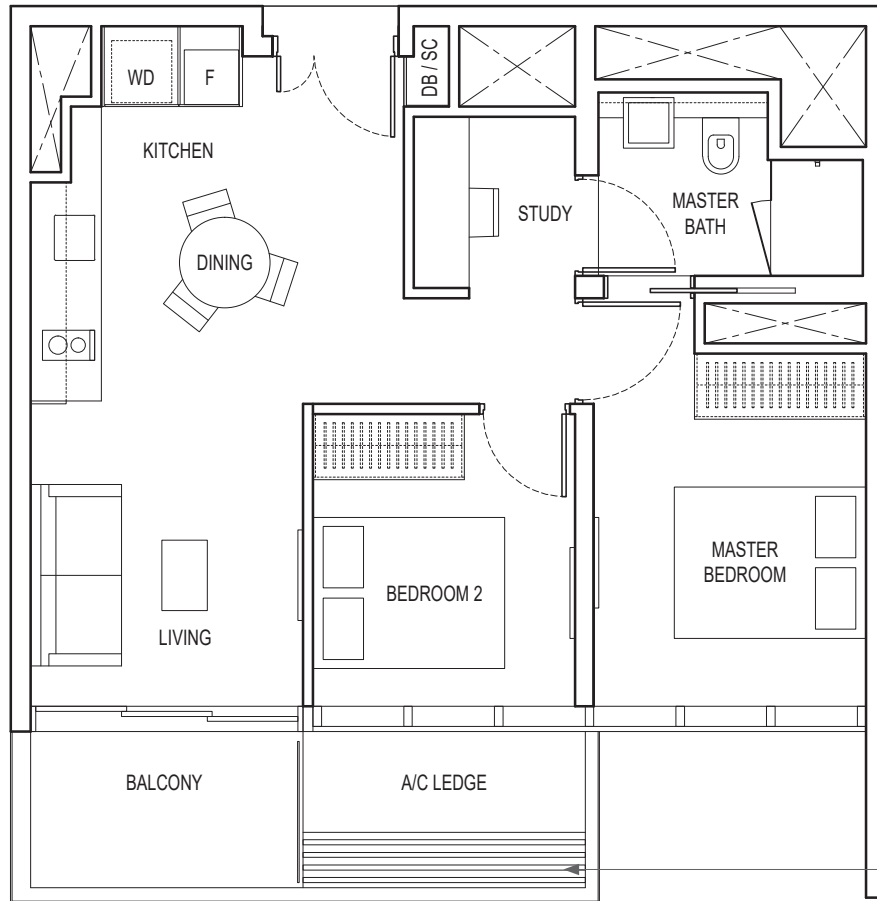
WD: Integrated Washer Dryer

2-BEDROOM + STUDY

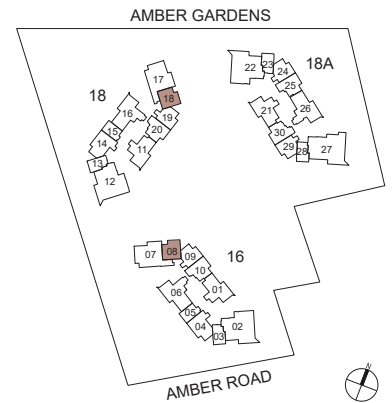
TYPE B2

63 sq m / 678 sq ft

BLK 16 : #03-08 to #21-08
 BLK 18 : #03-18 to #21-18



LIGHTWEIGHT ALUMINIUM TRELLIS FOR MAINTENANCE ACCESS ONLY (NOT INCLUDED IN STRATA AREA)



KEYPLAN IS NOT DRAWN TO SCALE

Area includes air-con (A/C) ledge, balcony and strata void area where applicable. Please refer to the key plan for orientation. The plans are subject to change as may be approved by relevant authorities. All floor plans are approximate measurements only and are subject to government re-survey. The balcony shall not be enclosed unless with the approved balcony screen.

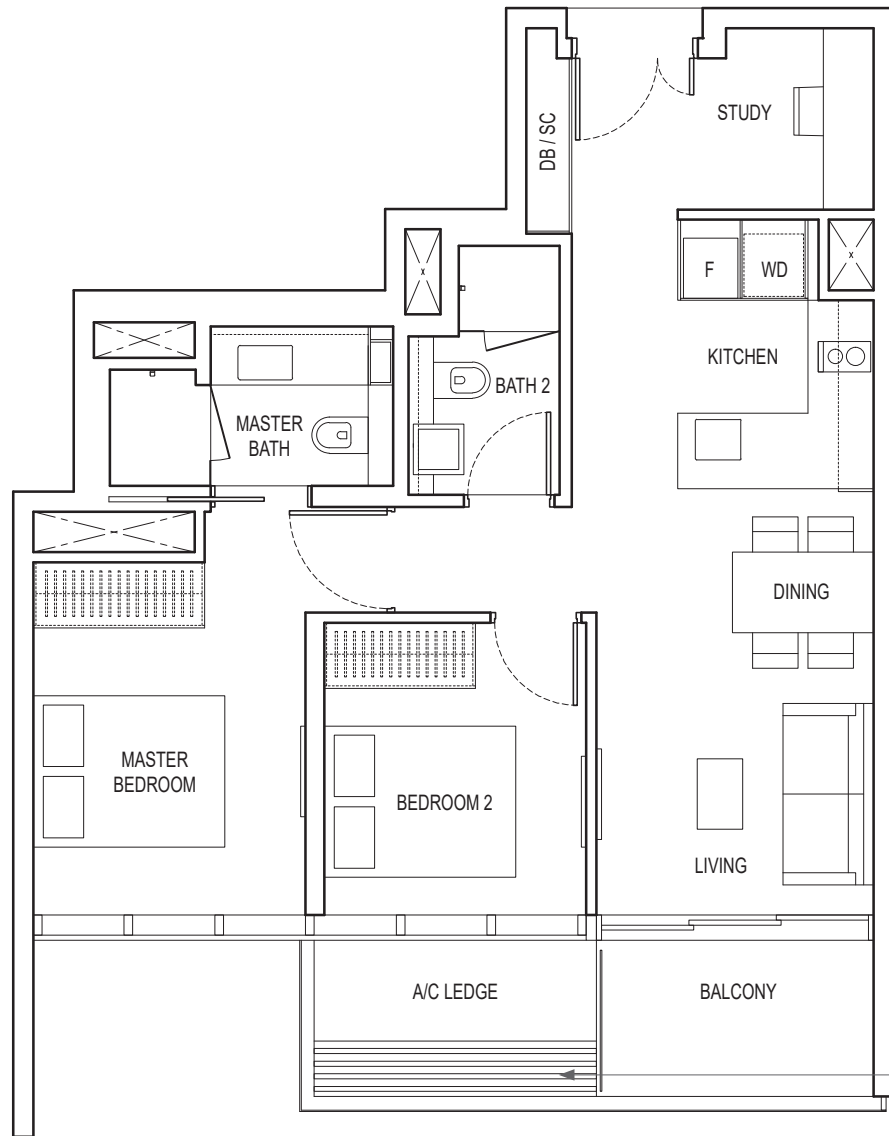
DB: Distribution Box SC: Shoe Cabinet ST: Storage WIW: Walk-in-Wardrobe / Closet WD: Integrated Washer Dryer
 W&D: Washer and Dryer F: Fridge WC: Water Closet PES: Private Enclosed Space

2-BEDROOM + STUDY

TYPE B3

70 sq m / 753 sq ft

BLK 18A : #03-25 to #21-25

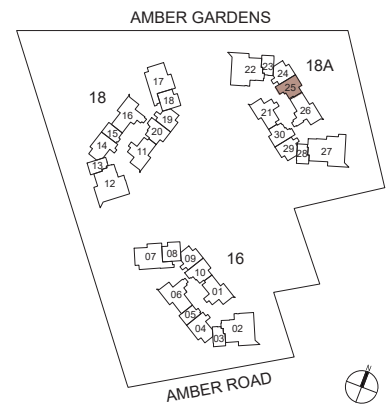


LIGHTWEIGHT ALUMINIUM TRELLIS FOR MAINTENANCE ACCESS ONLY (NOT INCLUDED IN STRATA AREA)



Area includes air-con (A/C) ledge, balcony and strata void area where applicable. Please refer to the key plan for orientation. The plans are subject to change as may be approved by relevant authorities. All floor plans are approximate measurements only and are subject to government re-survey. The balcony shall not be enclosed unless with the approved balcony screen.

DB: Distribution Box SC: Shoe Cabinet ST: Storage WIW: Walk-in-Wardrobe / Closet WD: Integrated Washer Dryer
 W&D: Washer and Dryer F: Fridge WC: Water Closet PES: Private Enclosed Space

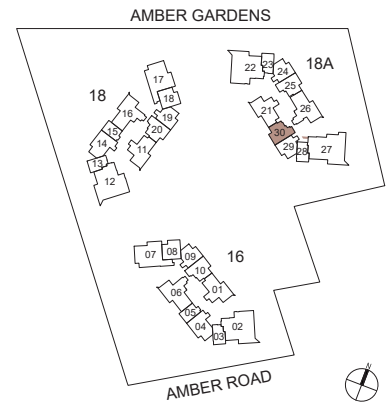
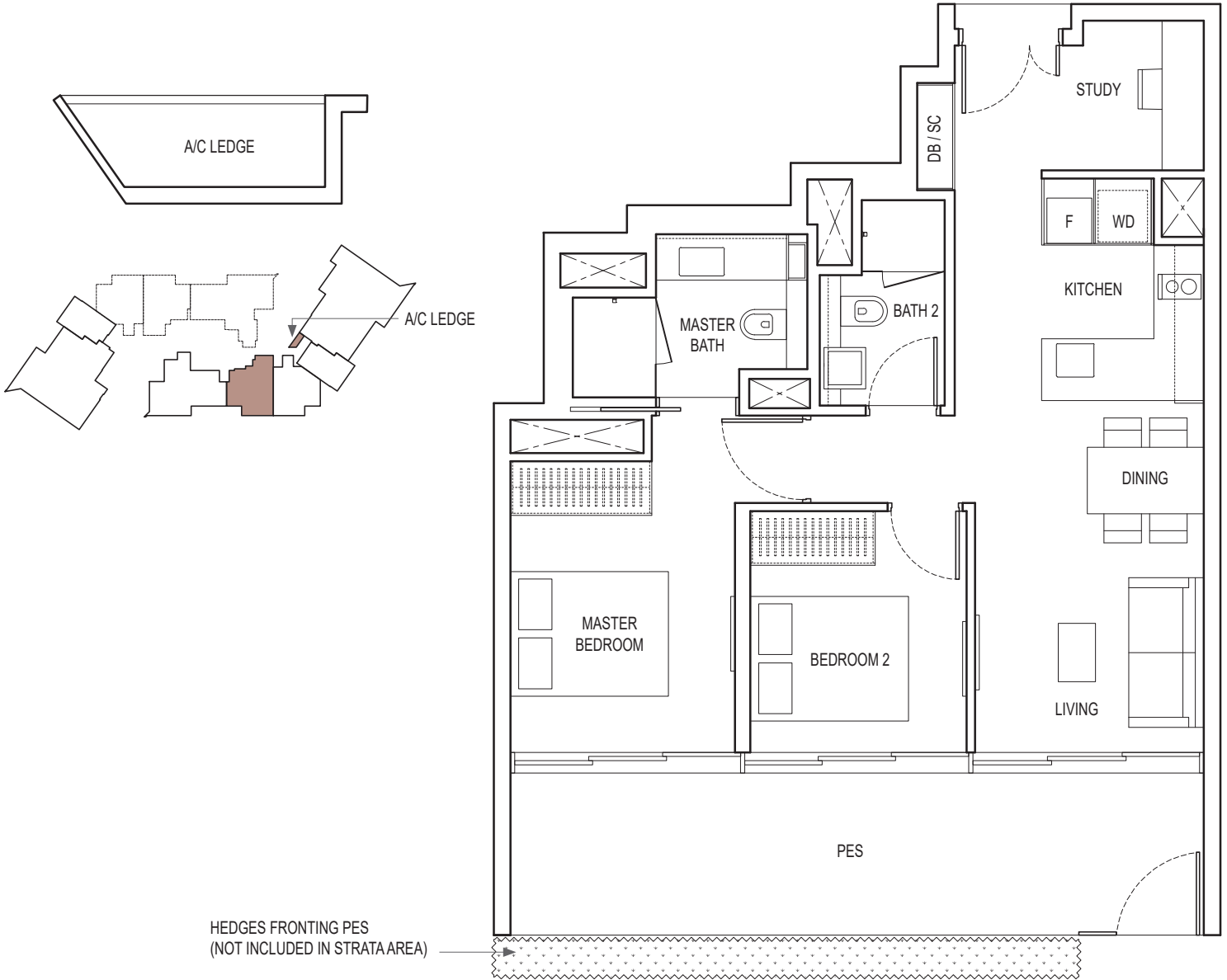


KEYPLAN IS NOT DRAWN TO SCALE

2-BEDROOM + STUDY

TYPE B4A PES

81 sq m / 872 sq ft
 BLK 18A : #01-30



Area includes air-con (A/C) ledge, balcony and strata void area where applicable. Please refer to the key plan for orientation. The plans are subject to change as may be approved by relevant authorities. All floor plans are approximate measurements only and are subject to government re-survey. The balcony shall not be enclosed unless with the approved balcony screen.

DB: Distribution Box SC: Shoe Cabinet ST: Storage WIW: Walk-in-Wardrobe / Closet WD: Integrated Washer Dryer
 W&D: Washer and Dryer F: Fridge WC: Water Closet PES: Private Enclosed Space

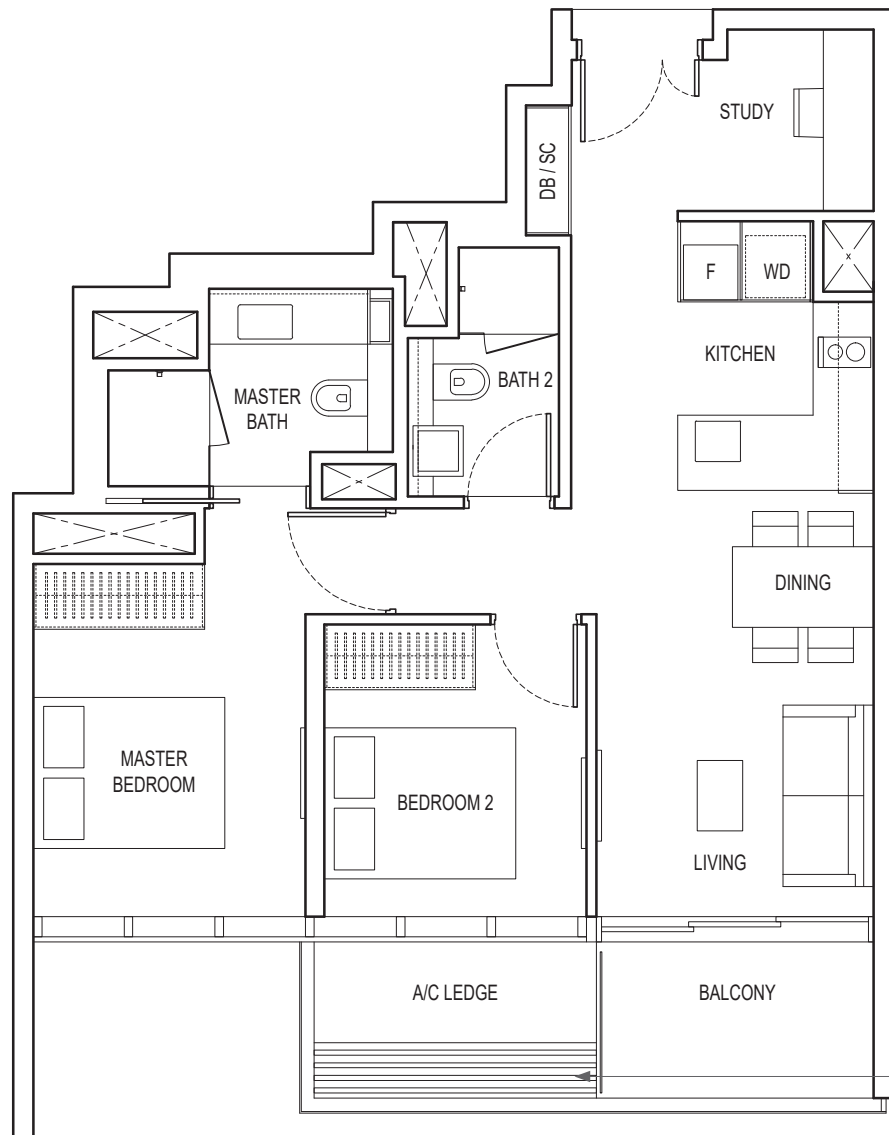
KEYPLAN IS NOT DRAWN TO SCALE

2-BEDROOM + STUDY

TYPE B4A

69 sq m / 743 sq ft

BLK 18A : #02-30 to #21-30

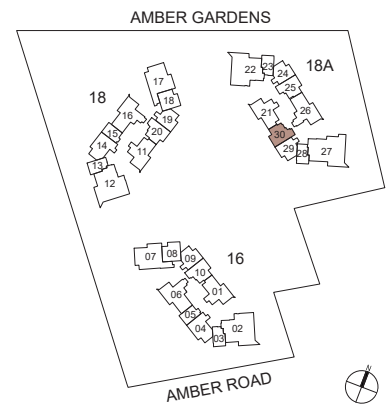


LIGHTWEIGHT ALUMINIUM TRELLIS FOR MAINTENANCE ACCESS ONLY (NOT INCLUDED IN STRATA AREA)



Area includes air-con (A/C) ledge, balcony and strata void area where applicable. Please refer to the key plan for orientation. The plans are subject to change as may be approved by relevant authorities. All floor plans are approximate measurements only and are subject to government re-survey. The balcony shall not be enclosed unless with the approved balcony screen.

DB: Distribution Box SC: Shoe Cabinet ST: Storage WIW: Walk-in-Wardrobe / Closet WD: Integrated Washer Dryer
 W&D: Washer and Dryer F: Fridge WC: Water Closet PES: Private Enclosed Space



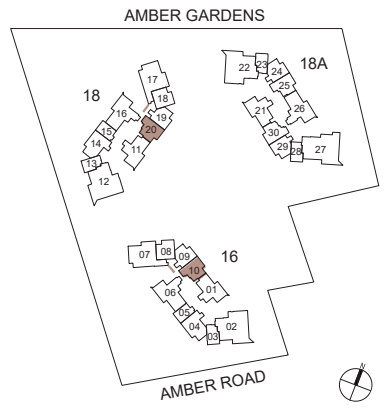
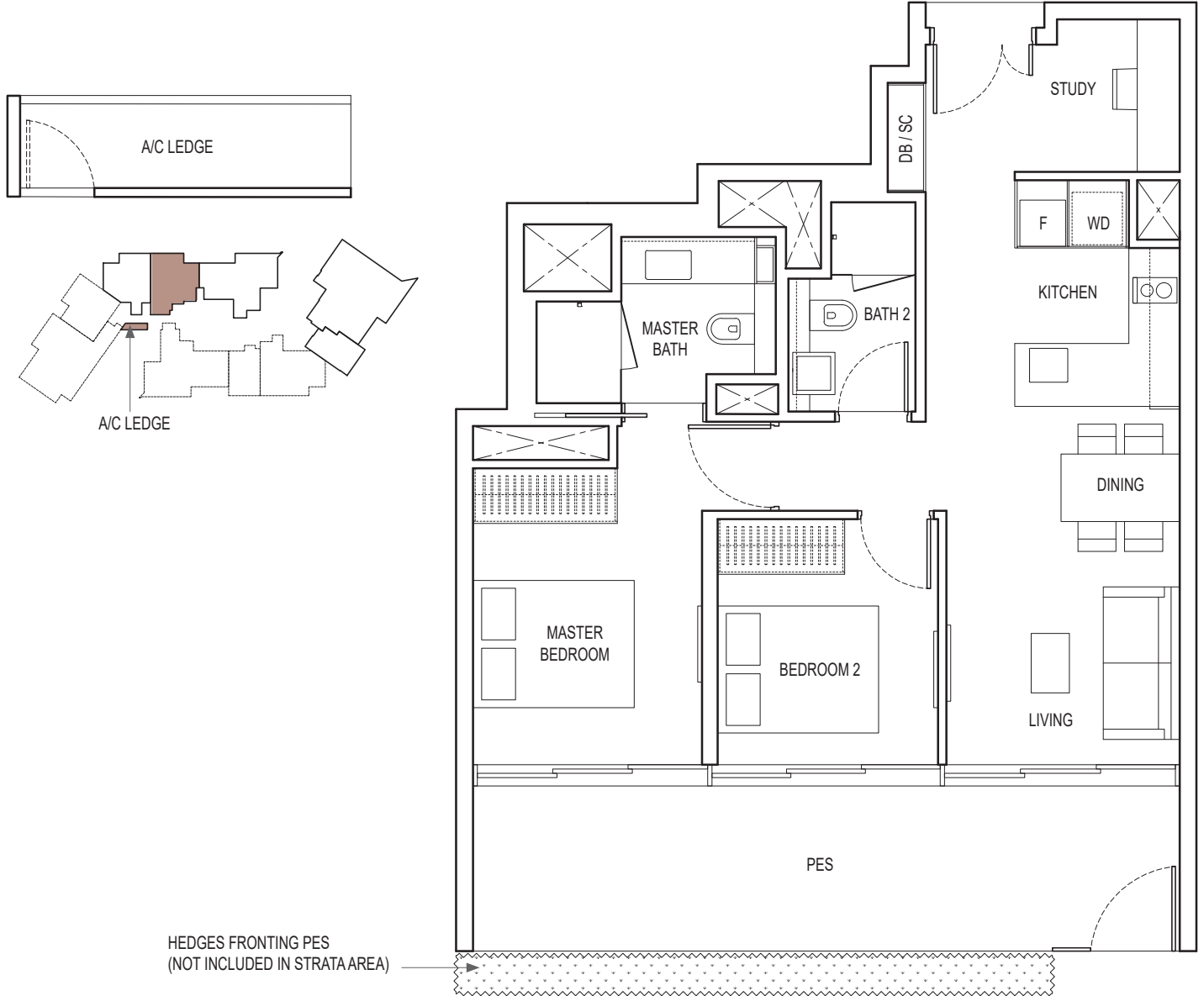
KEYPLAN IS NOT DRAWN TO SCALE

2-BEDROOM + STUDY

TYPE B4B PES

82 sq m / 883 sq ft

BLK 16 : #01-10
 BLK 18 : #01-20



Area includes air-con (A/C) ledge, balcony and strata void area where applicable. Please refer to the key plan for orientation. The plans are subject to change as may be approved by relevant authorities. All floor plans are approximate measurements only and are subject to government re-survey. The balcony shall not be enclosed unless with the approved balcony screen.

DB: Distribution Box SC: Shoe Cabinet ST: Storage WIW: Walk-in-Wardrobe / Closet WD: Integrated Washer Dryer
 W&D: Washer and Dryer F: Fridge WC: Water Closet PES: Private Enclosed Space

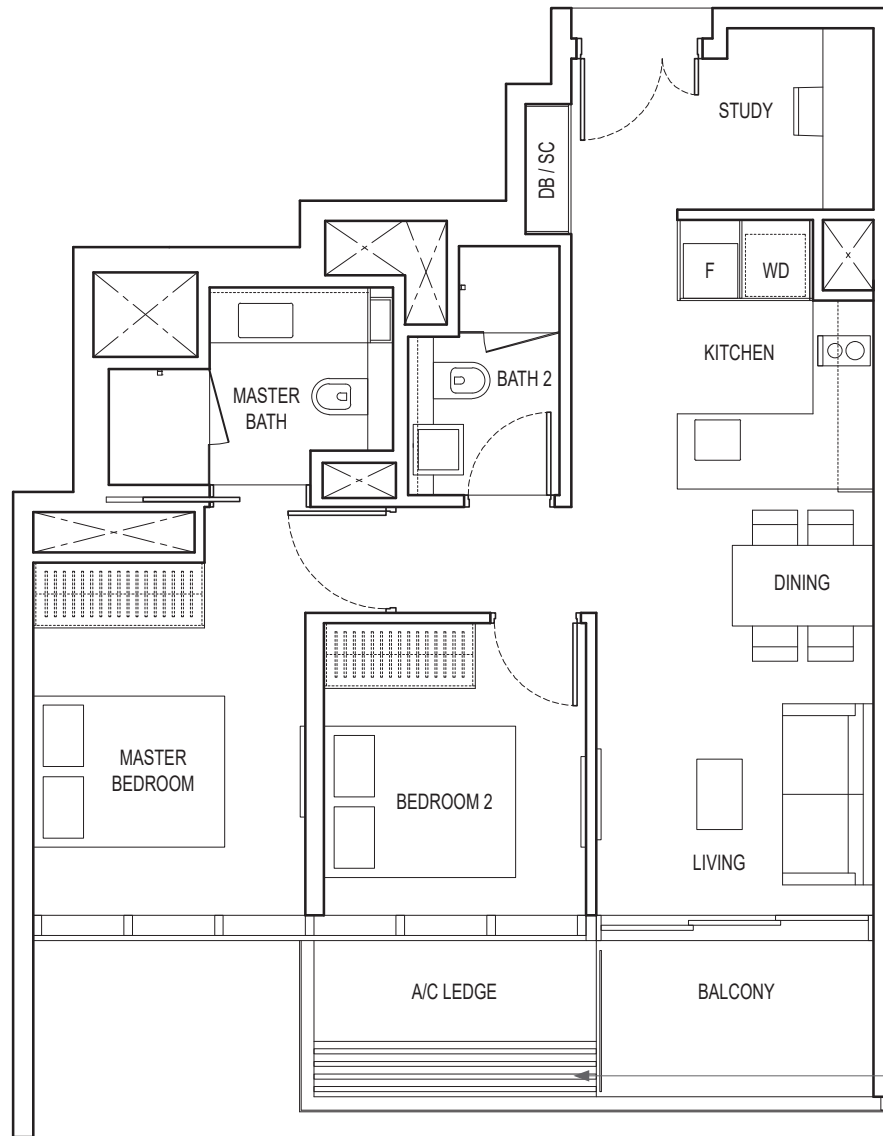
KEYPLAN IS NOT DRAWN TO SCALE

2-BEDROOM + STUDY

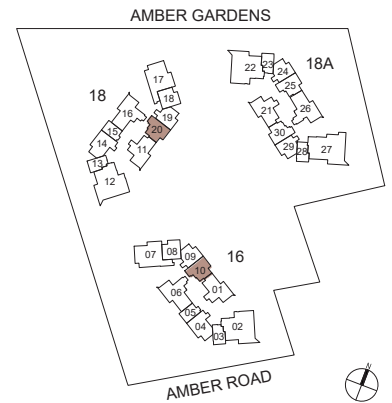
TYPE B4B

69 sq m / 743 sq ft

BLK 16 : #02-10 to #21-10
 BLK 18 : #02-20 to #21-20



LIGHTWEIGHT ALUMINIUM TRELLIS FOR MAINTENANCE ACCESS ONLY (NOT INCLUDED IN STRATA AREA)



KEYPLAN IS NOT DRAWN TO SCALE

Area includes air-con (A/C) ledge, balcony and strata void area where applicable. Please refer to the key plan for orientation. The plans are subject to change as may be approved by relevant authorities. All floor plans are approximate measurements only and are subject to government re-survey. The balcony shall not be enclosed unless with the approved balcony screen.

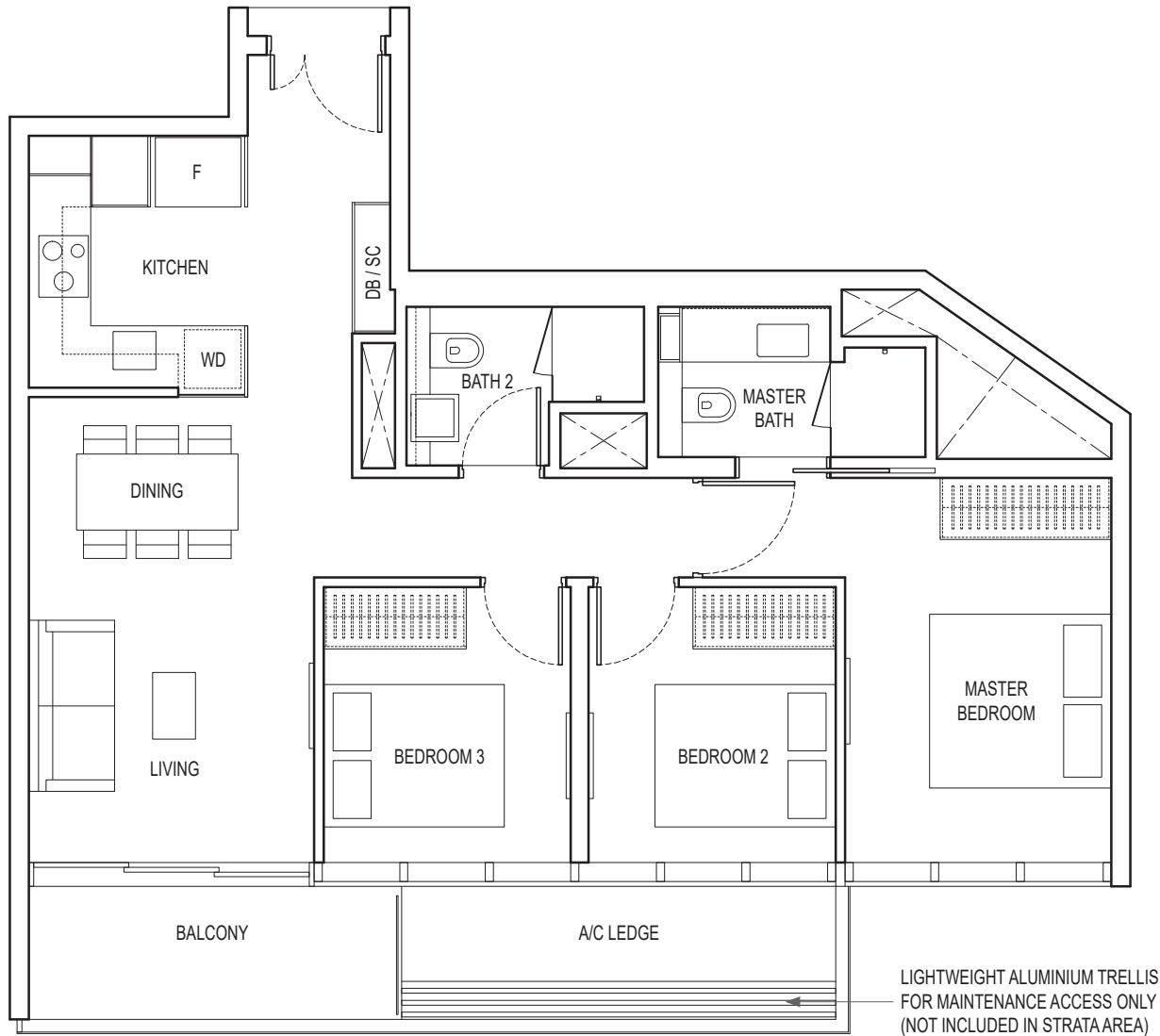
DB: Distribution Box SC: Shoe Cabinet ST: Storage WIW: Walk-in-Wardrobe / Closet WD: Integrated Washer Dryer
 W&D: Washer and Dryer F: Fridge WC: Water Closet PES: Private Enclosed Space

3-BEDROOM

TYPE C1

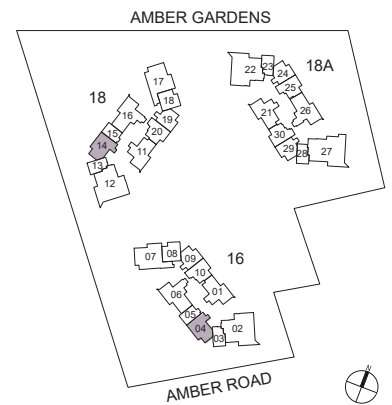
88 sq m / 947 sq ft

BLK 16 : #03-04 to #21-04
 BLK 18 : #03-14 to #21-14



Area includes air-con (A/C) ledge, balcony and strata void area where applicable. Please refer to the key plan for orientation. The plans are subject to change as may be approved by relevant authorities. All floor plans are approximate measurements only and are subject to government re-survey. The balcony shall not be enclosed unless with the approved balcony screen.

DB: Distribution Box SC: Shoe Cabinet ST: Storage WIW: Walk-in-Wardrobe / Closet WD: Integrated Washer Dryer
 W&D: Washer and Dryer F: Fridge WC: Water Closet PES: Private Enclosed Space



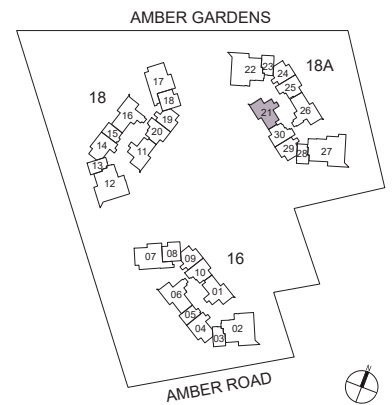
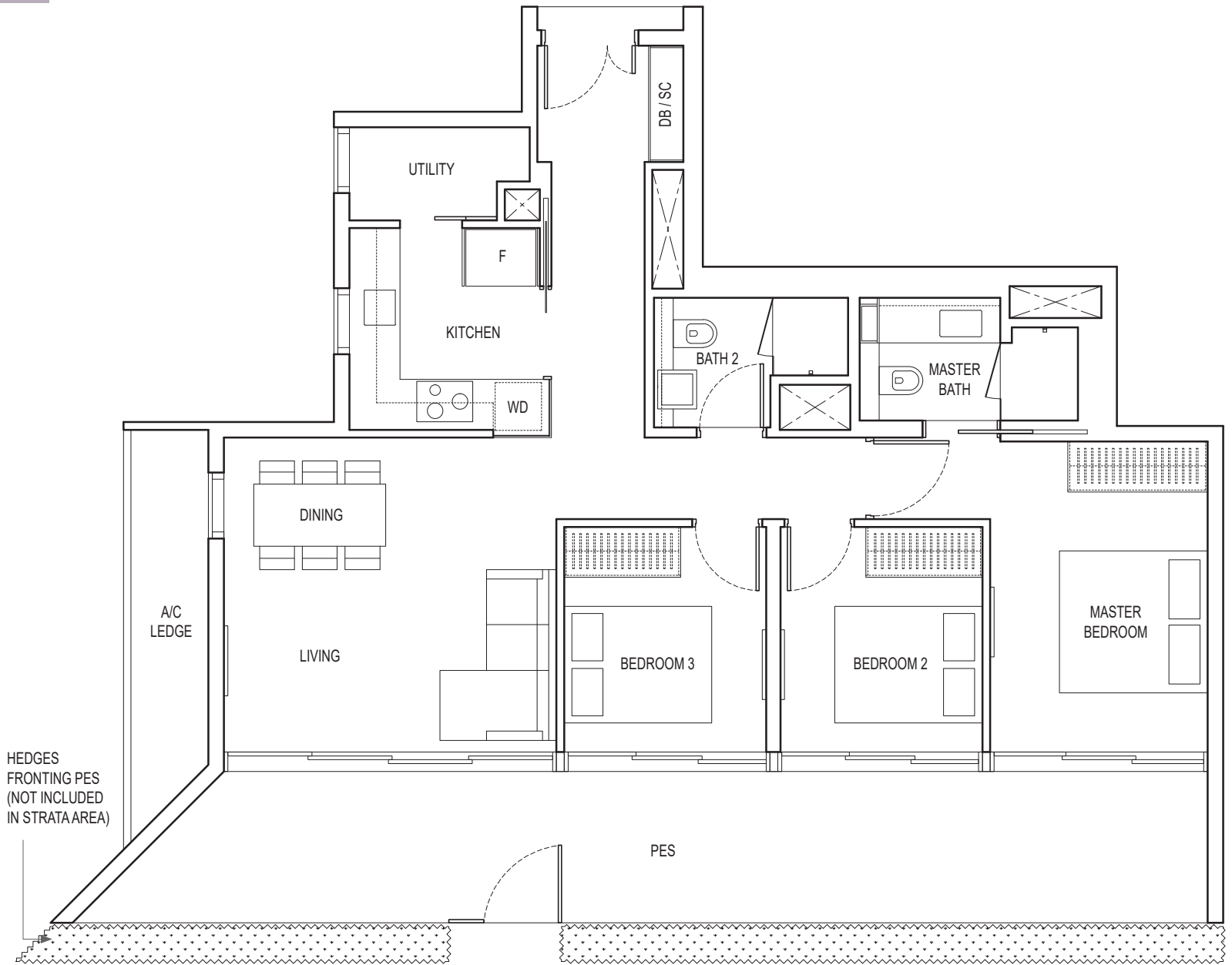
KEYPLAN IS NOT DRAWN TO SCALE

3-BEDROOM

TYPE C2A PES

118 sq m / 1270 sq ft

BLK 18A : #01-21



Area includes air-con (A/C) ledge, balcony and strata void area where applicable. Please refer to the key plan for orientation. The plans are subject to change as may be approved by relevant authorities. All floor plans are approximate measurements only and are subject to government re-survey. The balcony shall not be enclosed unless with the approved balcony screen.

DB: Distribution Box SC: Shoe Cabinet ST: Storage WIW: Walk-in-Wardrobe / Closet WD: Integrated Washer Dryer
 W&D: Washer and Dryer F: Fridge WC: Water Closet PES: Private Enclosed Space

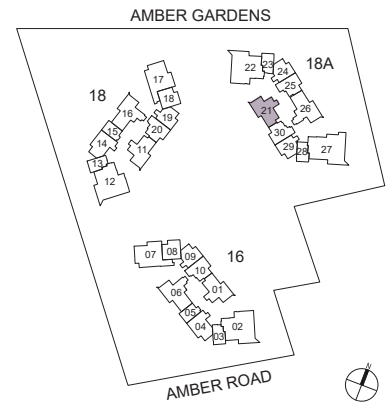
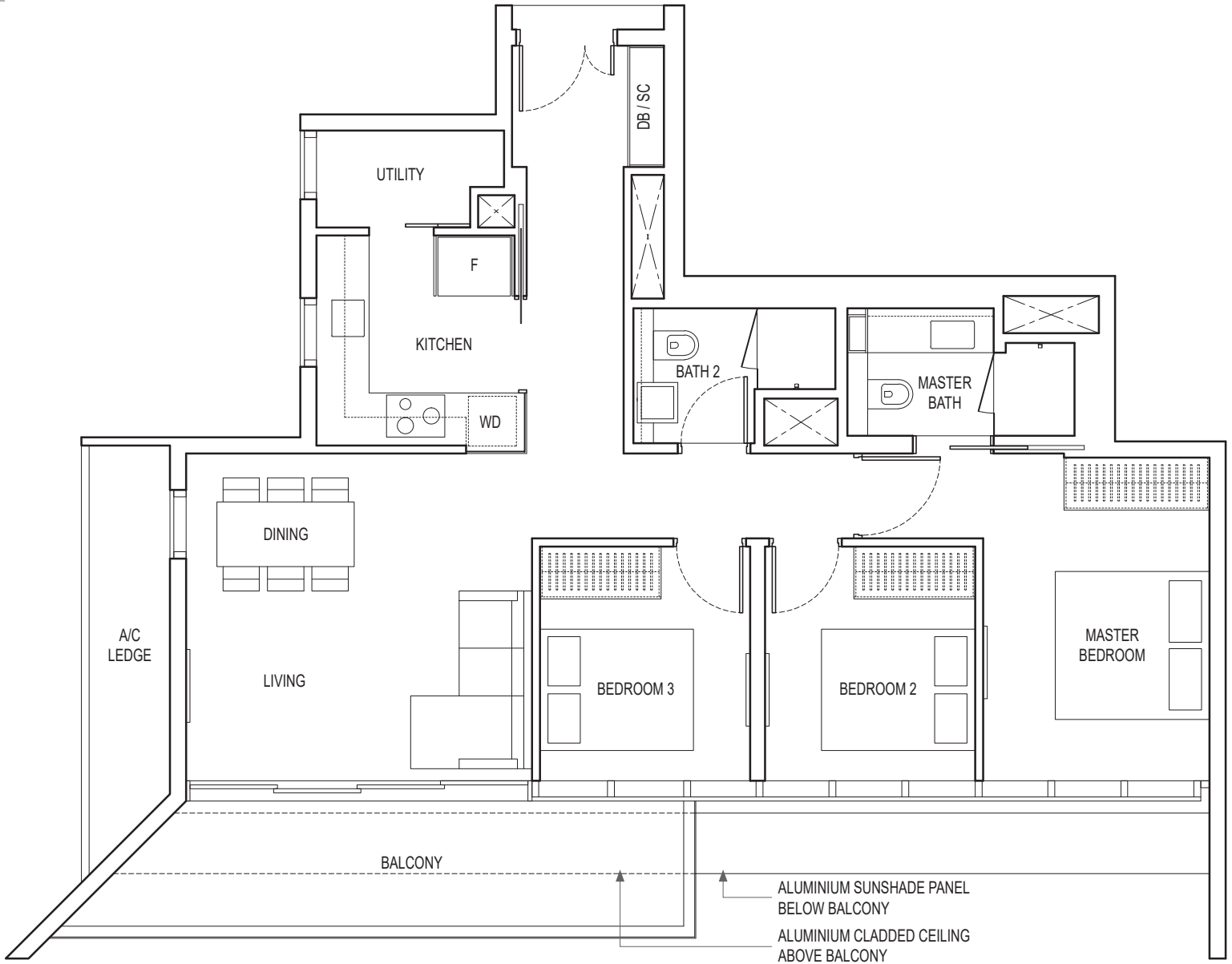
KEYPLAN IS NOT DRAWN TO SCALE

3-BEDROOM

TYPE C2A

103 sq m / 1109 sq ft

BLK 18A : #02-21 to #21-21



Area includes air-con (A/C) ledge, balcony and strata void area where applicable. Please refer to the key plan for orientation. The plans are subject to change as may be approved by relevant authorities. All floor plans are approximate measurements only and are subject to government re-survey. The balcony shall not be enclosed unless with the approved balcony screen.

DB: Distribution Box SC: Shoe Cabinet ST: Storage WIW: Walk-in-Wardrobe / Closet WD: Integrated Washer Dryer
 W&D: Washer and Dryer F: Fridge WC: Water Closet PES: Private Enclosed Space

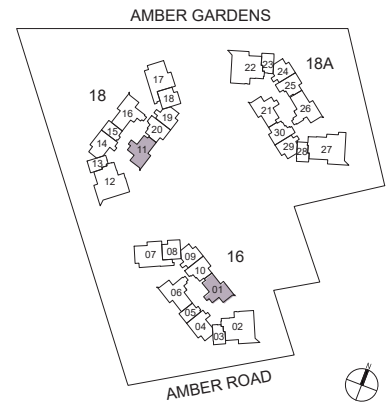
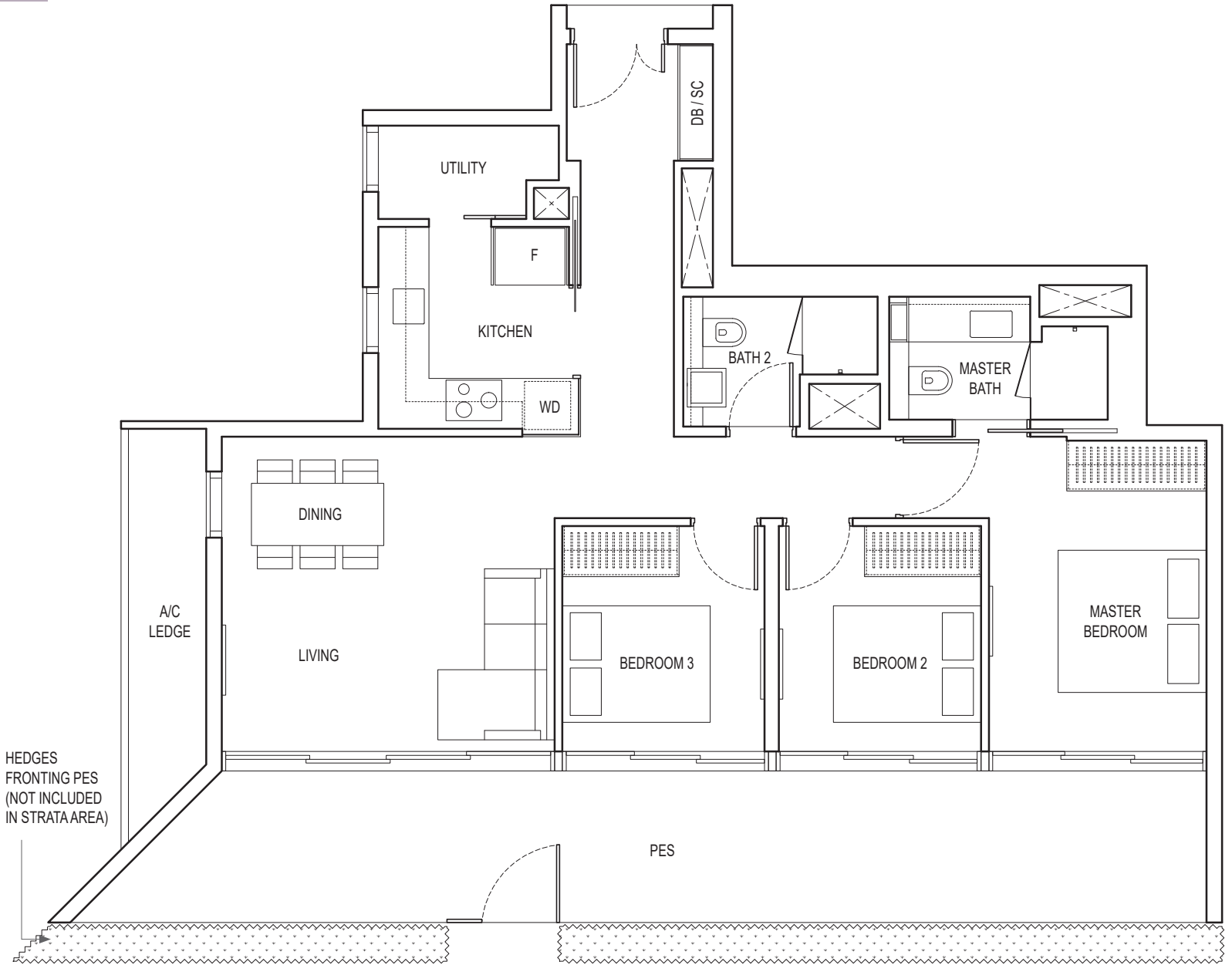
KEYPLAN IS NOT DRAWN TO SCALE

3-BEDROOM

TYPE C2B PES

118 sq m / 1270 sq ft

BLK 16 : #01-01
 BLK 18 : #01-11



Area includes air-con (A/C) ledge, balcony and strata void area where applicable. Please refer to the key plan for orientation. The plans are subject to change as may be approved by relevant authorities. All floor plans are approximate measurements only and are subject to government re-survey. The balcony shall not be enclosed unless with the approved balcony screen.

DB: Distribution Box SC: Shoe Cabinet ST: Storage WIW: Walk-in-Wardrobe / Closet WD: Integrated Washer Dryer
 W&D: Washer and Dryer F: Fridge WC: Water Closet PES: Private Enclosed Space

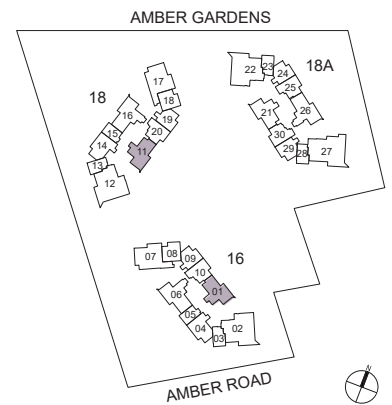
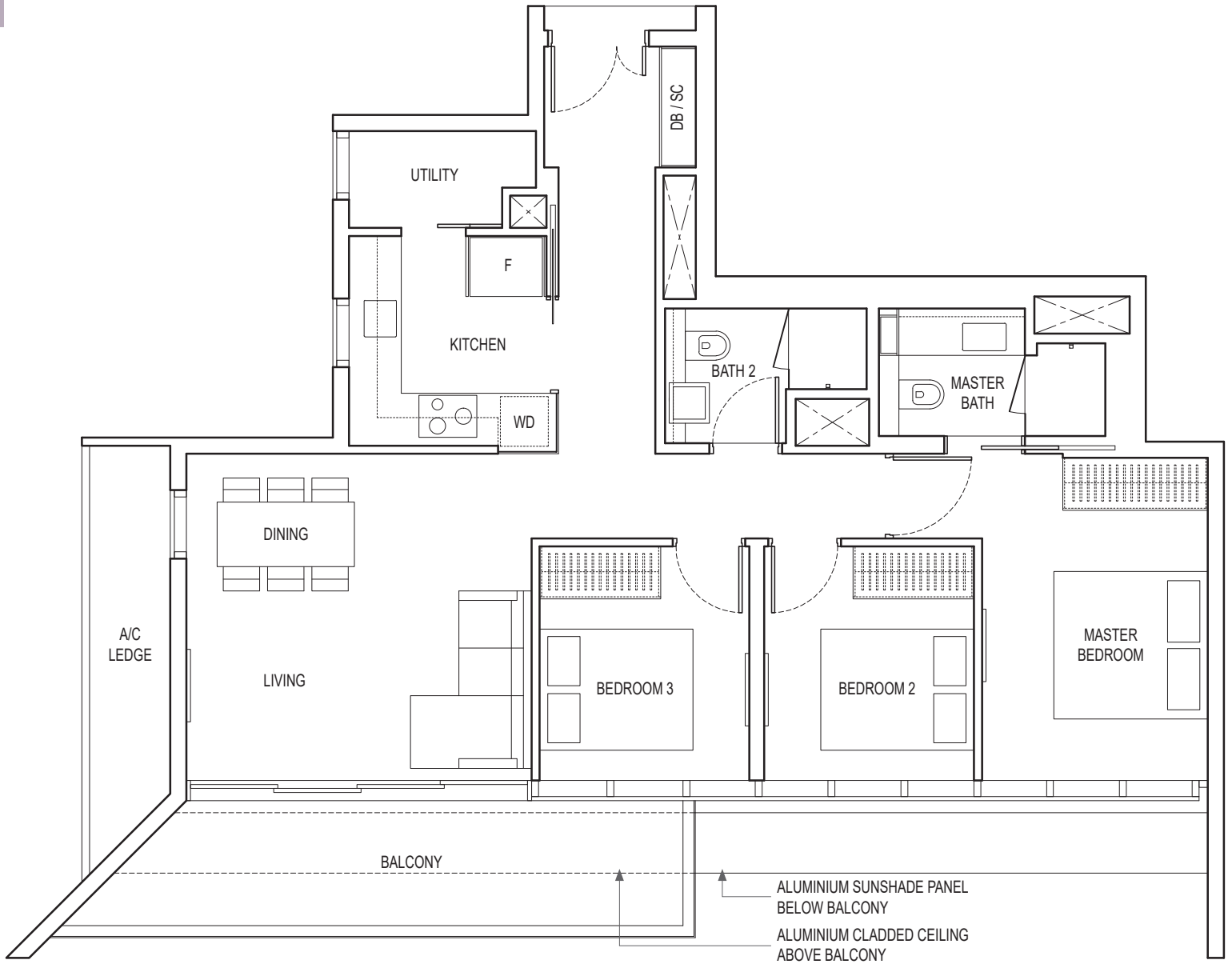
KEYPLAN IS NOT DRAWN TO SCALE

3-BEDROOM

TYPE C2B

103 sq m / 1109 sq ft

BLK 16 : #02-01 to #21-01
 BLK 18 : #02-11 to #21-11



Area includes air-con (A/C) ledge, balcony and strata void area where applicable. Please refer to the key plan for orientation. The plans are subject to change as may be approved by relevant authorities. All floor plans are approximate measurements only and are subject to government re-survey. The balcony shall not be enclosed unless with the approved balcony screen.

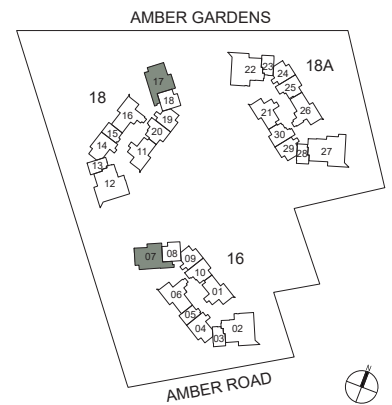
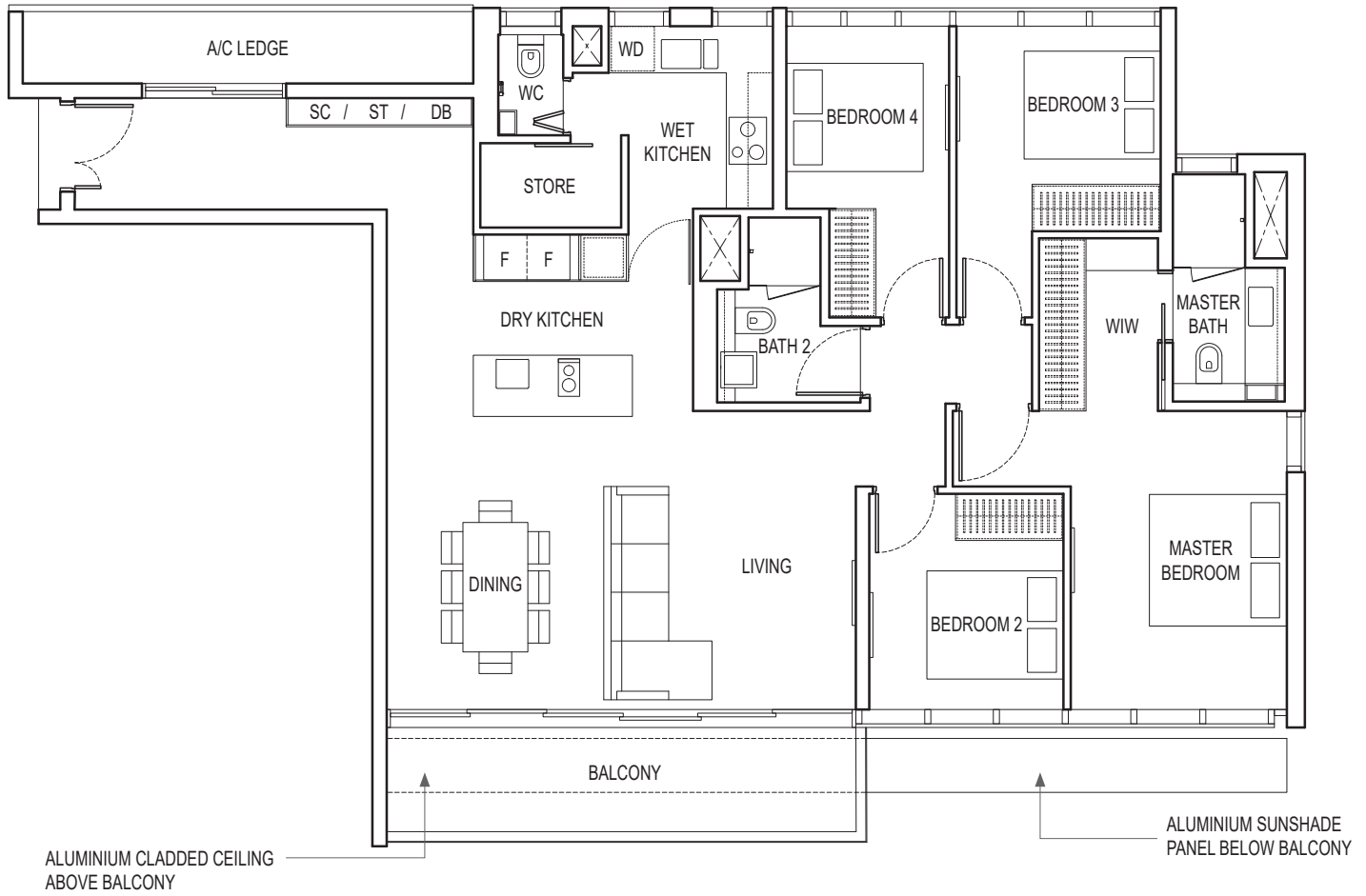
DB: Distribution Box SC: Shoe Cabinet ST: Storage WIW: Walk-in-Wardrobe / Closet WD: Integrated Washer Dryer
 W&D: Washer and Dryer F: Fridge WC: Water Closet PES: Private Enclosed Space

KEYPLAN IS NOT DRAWN TO SCALE

4-BEDROOM TYPE D1

146 sq m / 1572 sq ft

BLK 16 : #03-07 to #21-07
BLK 18 : #03-17 to #21-17



Area includes air-con (A/C) ledge, balcony and strata void area where applicable. Please refer to the key plan for orientation. The plans are subject to change as may be approved by relevant authorities. All floor plans are approximate measurements only and are subject to government re-survey. The balcony shall not be enclosed unless with the approved balcony screen.

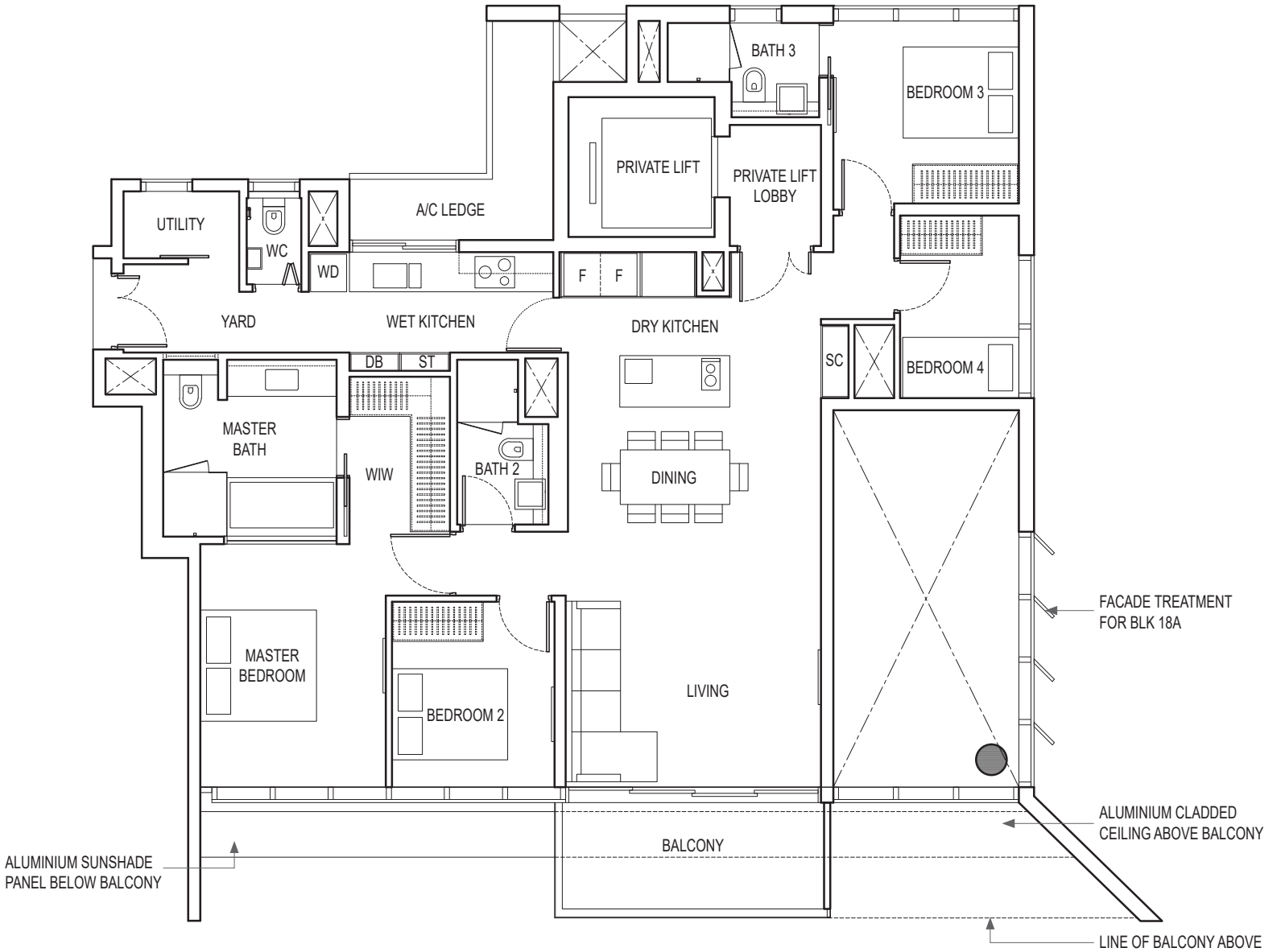
DB: Distribution Box SC: Shoe Cabinet ST: Storage WIW: Walk-in-Wardrobe / Closet WD: Integrated Washer Dryer
W&D: Washer and Dryer F: Fridge WC: Water Closet PES: Private Enclosed Space

KEYPLAN IS NOT DRAWN TO SCALE

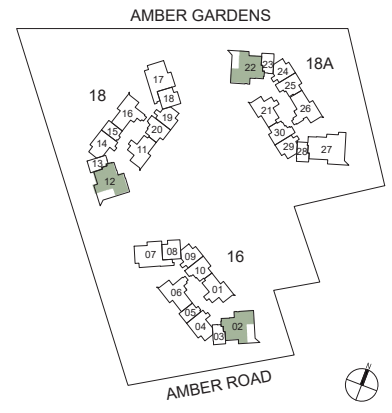
4-BEDROOM PREMIUM TYPE D2

147 sq m / 1582 sq ft

- BLK 16 : #03-02, #05-02, #07-02, #09-02, #11-02, #13-02, #15-02, #17-02, #19-02
- BLK 18 : #03-12, #05-12, #07-12, #09-12, #11-12, #13-12, #15-12, #17-12, #19-12
- BLK 18A : #03-22, #05-22, #07-22, #09-22, #11-22, #13-22, #15-22, #17-22, #19-22



0 1m 2m 5m



KEYPLAN IS NOT DRAWN TO SCALE

Area includes air-con (A/C) ledge, balcony and strata void area where applicable. Please refer to the key plan for orientation. The plans are subject to change as may be approved by relevant authorities. All floor plans are approximate measurements only and are subject to government re-survey. The balcony shall not be enclosed unless with the approved balcony screen.

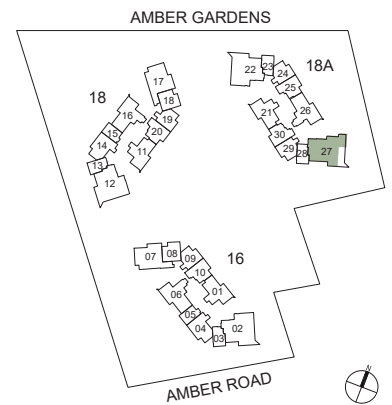
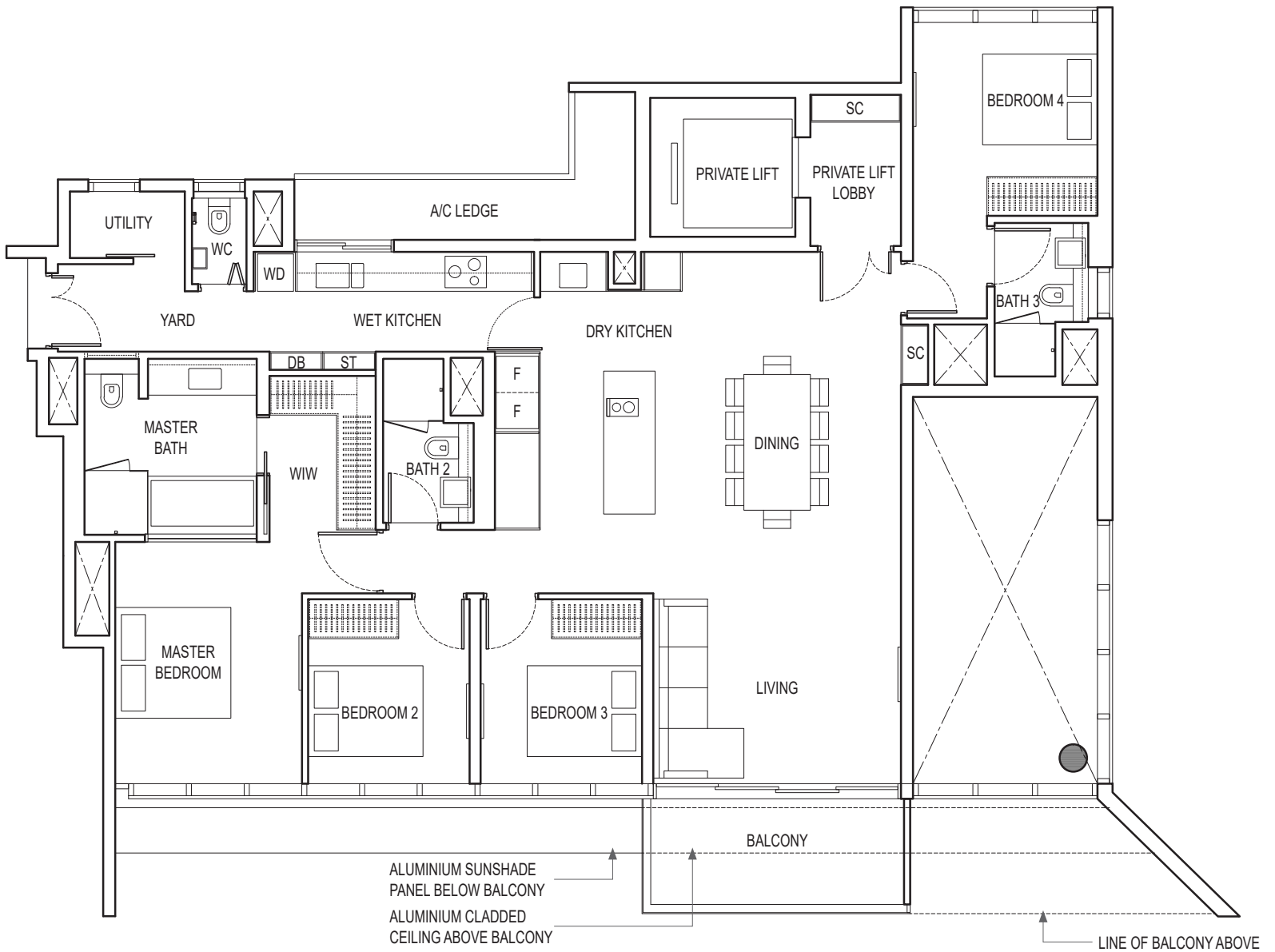
DB: Distribution Box SC: Shoe Cabinet ST: Storage WIW: Walk-in-Wardrobe / Closet WD: Integrated Washer Dryer
W&D: Washer and Dryer F: Fridge WC: Water Closet PES: Private Enclosed Space

4-BEDROOM PREMIUM

TYPE D3

167 sq m / 1798 sq ft

BLK 18A : #03-27, #05-27, #07-27, #09-27, #11-27,
#13-27, #15-27, #17-27, #19-27



Area includes air-con (A/C) ledge, balcony and strata void area where applicable. Please refer to the key plan for orientation. The plans are subject to change as may be approved by relevant authorities. All floor plans are approximate measurements only and are subject to government re-survey. The balcony shall not be enclosed unless with the approved balcony screen.

DB: Distribution Box SC: Shoe Cabinet ST: Storage WIW: Walk-in-Wardrobe / Closet WD: Integrated Washer Dryer
W&D: Washer and Dryer F: Fridge WC: Water Closet PES: Private Enclosed Space

KEYPLAN IS NOT DRAWN TO SCALE

4-BEDROOM + STUDY

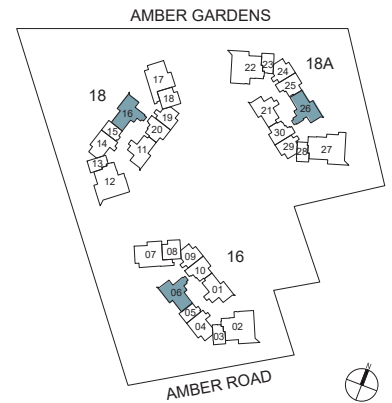
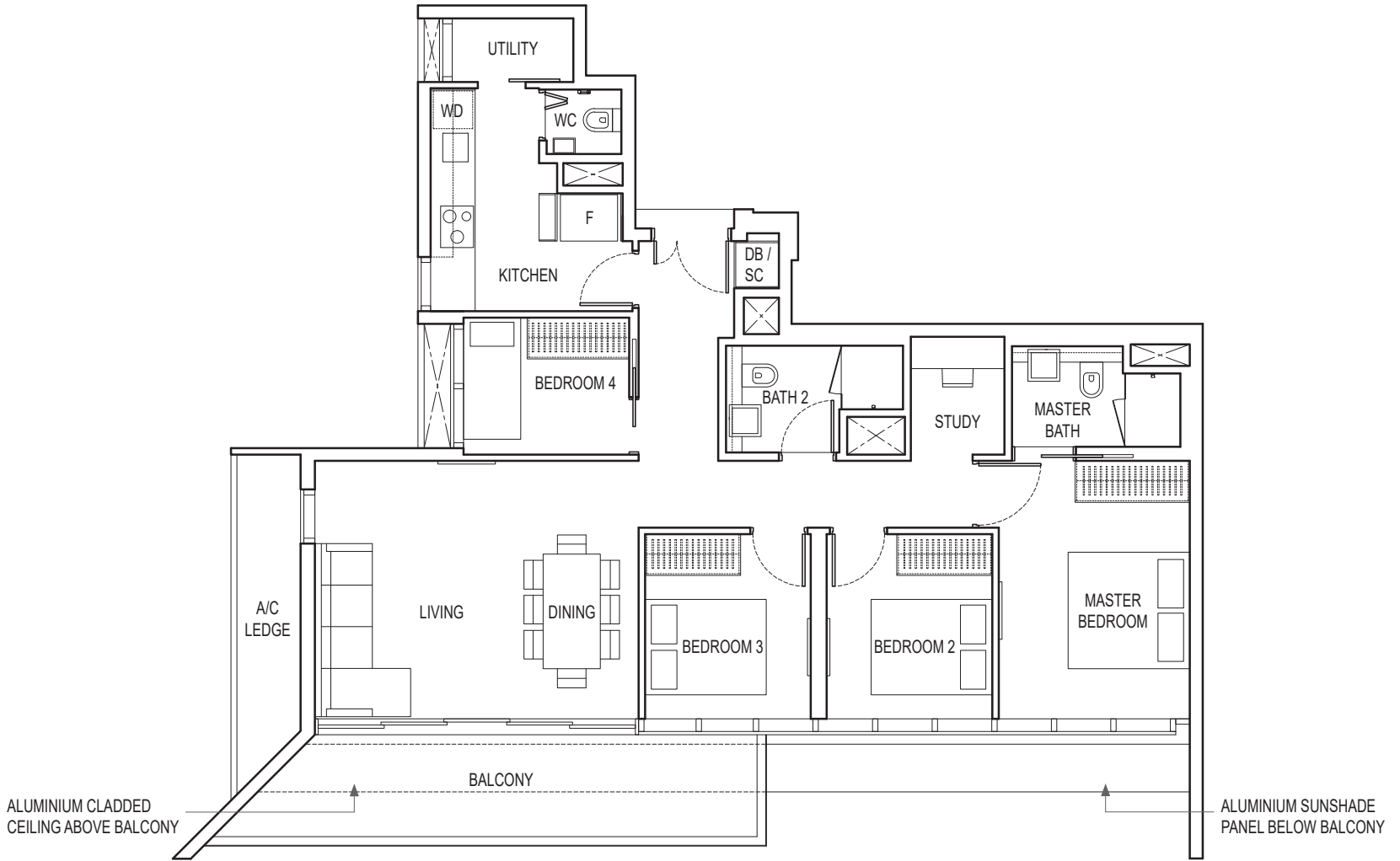
TYPE D4

121 sq m / 1302 sq ft

BLK 16 : #03-06 to #21-06

BLK 18 : #03-16 to #21-16

BLK 18A : #03-26 to #21-26



Area includes air-con (A/C) ledge, balcony and strata void area where applicable. Please refer to the key plan for orientation. The plans are subject to change as may be approved by relevant authorities. All floor plans are approximate measurements only and are subject to government re-survey. The balcony shall not be enclosed unless with the approved balcony screen.

DB: Distribution Box SC: Shoe Cabinet ST: Storage WIW: Walk-in-Wardrobe / Closet WD: Integrated Washer Dryer
 W&D: Washer and Dryer F: Fridge WC: Water Closet PES: Private Enclosed Space

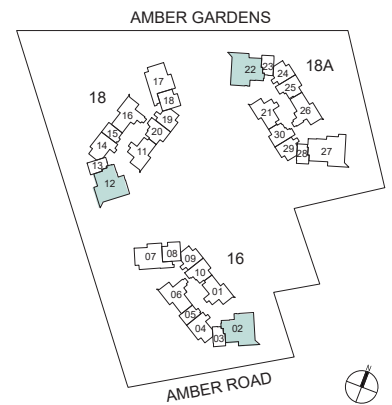
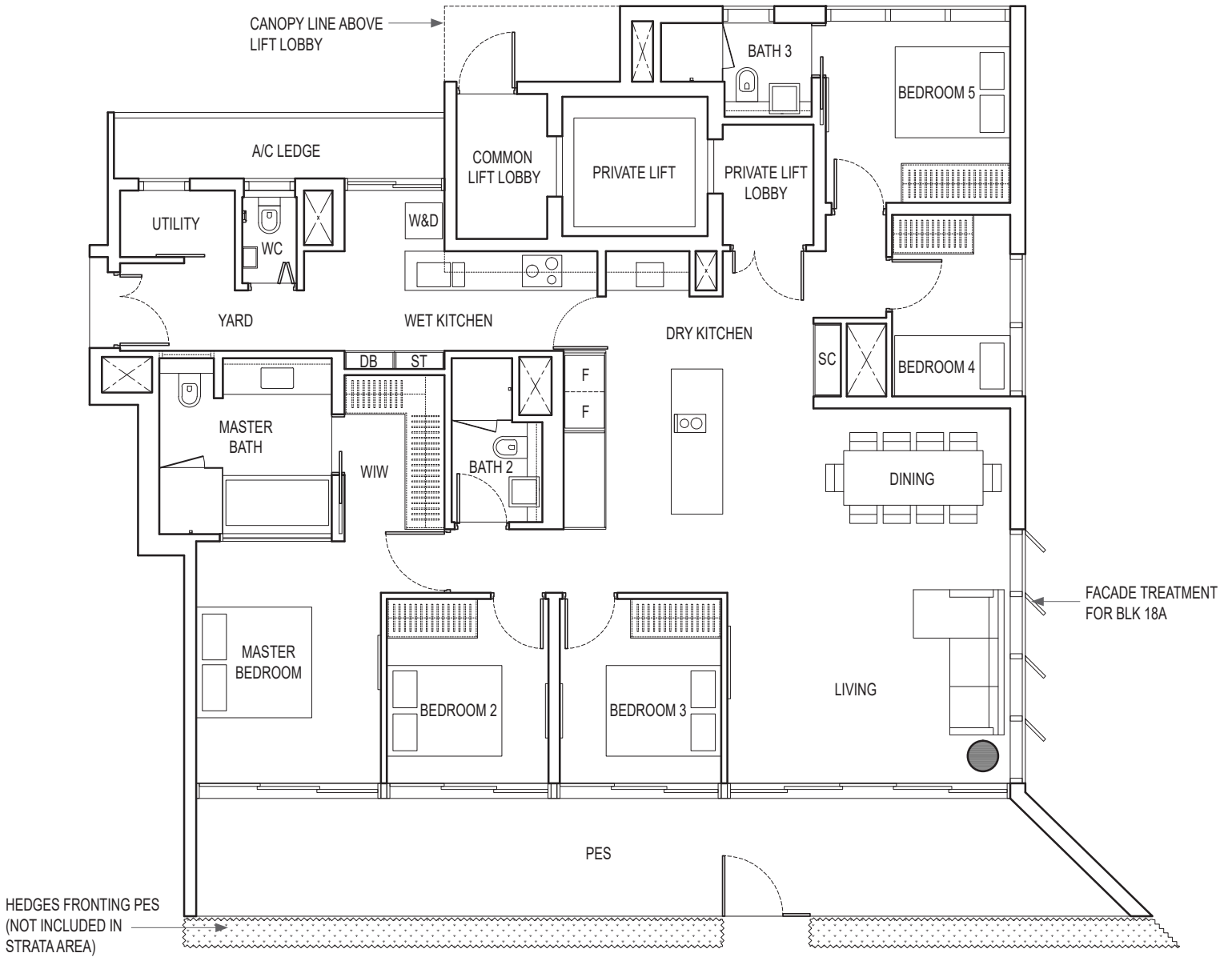
KEYPLAN IS NOT DRAWN TO SCALE

5-BEDROOM PREMIUM

TYPE E1 PES

190 sq m / 2045 sq ft

BLK 16 : #01-02
 BLK 18 : #01-12
 BLK 18A : #01-22



Area includes air-con (A/C) ledge, balcony and strata void area where applicable. Please refer to the key plan for orientation. The plans are subject to change as may be approved by relevant authorities. All floor plans are approximate measurements only and are subject to government re-survey. The balcony shall not be enclosed unless with the approved balcony screen.

DB: Distribution Box SC: Shoe Cabinet ST: Storage WIW: Walk-in-Wardrobe / Closet WD: Integrated Washer Dryer
 W&D: Washer and Dryer F: Fridge WC: Water Closet PES: Private Enclosed Space

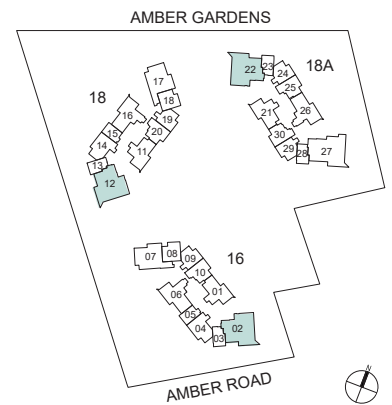
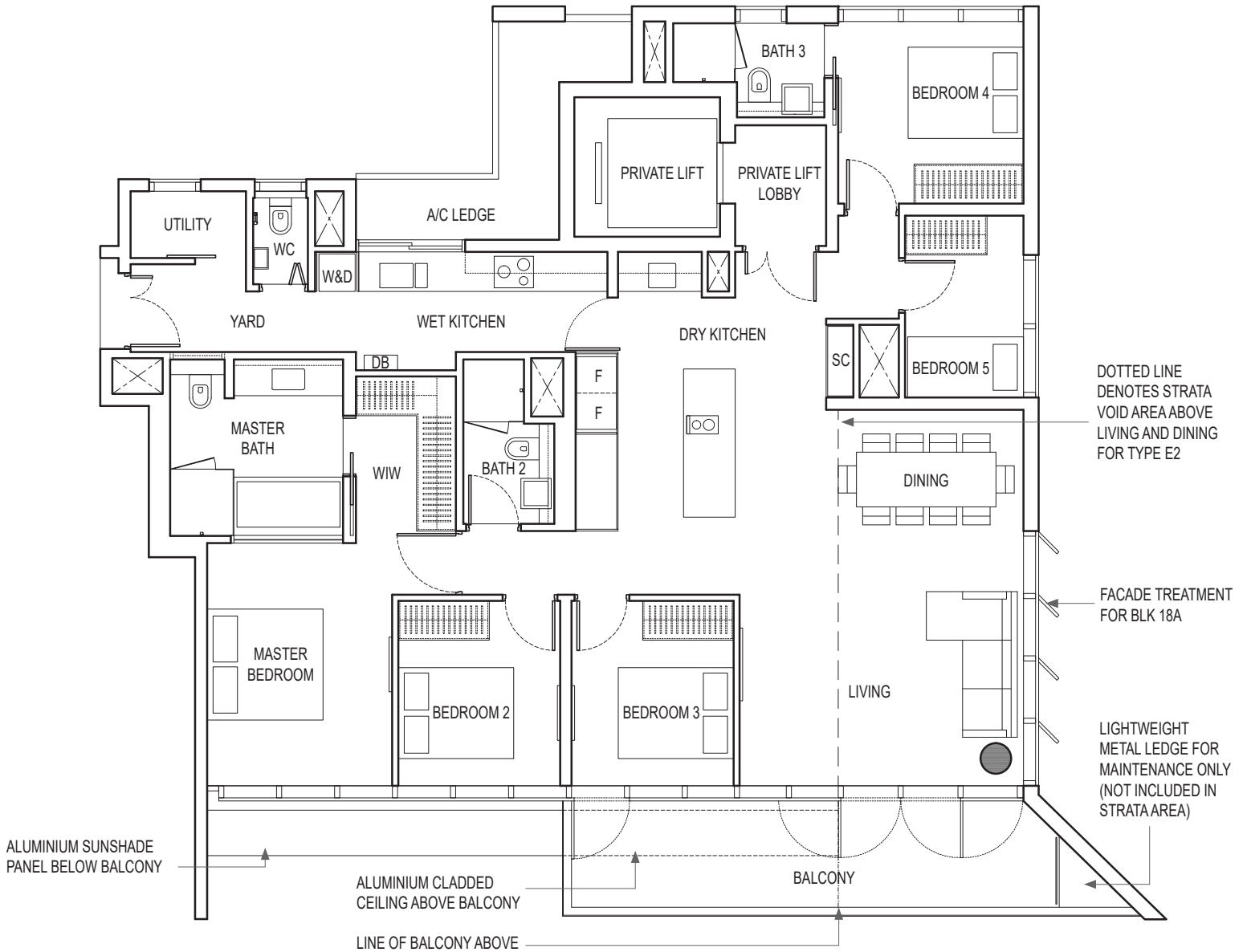
KEYPLAN IS NOT DRAWN TO SCALE

5-BEDROOM PREMIUM

TYPE E2

199 sq m / 2142 sq ft
 (Inclusive of strata void area of
 22 sq m / 237 sq ft above Living and Dining)

- BLK 16 : #02-02, #04-02, #06-02, #08-02, #10-02,
 #12-02, #14-02, #16-02, #18-02
- BLK 18 : #02-12, #04-12, #06-12, #08-12, #10-12,
 #12-12, #14-12, #16-12, #18-12
- BLK 18A : #02-22, #04-22, #06-22, #08-22, #10-22,
 #12-22, #14-22, #16-22, #18-22



Area includes air-con (A/C) ledge, balcony and strata void area where applicable. Please refer to the key plan for orientation. The plans are subject to change as may be approved by relevant authorities. All floor plans are approximate measurements only and are subject to government re-survey. The balcony shall not be enclosed unless with the approved balcony screen.

DB: Distribution Box SC: Shoe Cabinet ST: Storage WIW: Walk-in-Wardrobe / Closet WD: Integrated Washer Dryer
 W&D: Washer and Dryer F: Fridge WC: Water Closet PES: Private Enclosed Space

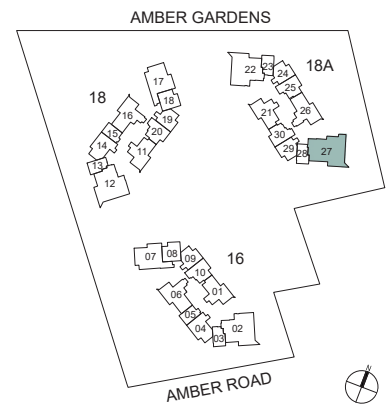
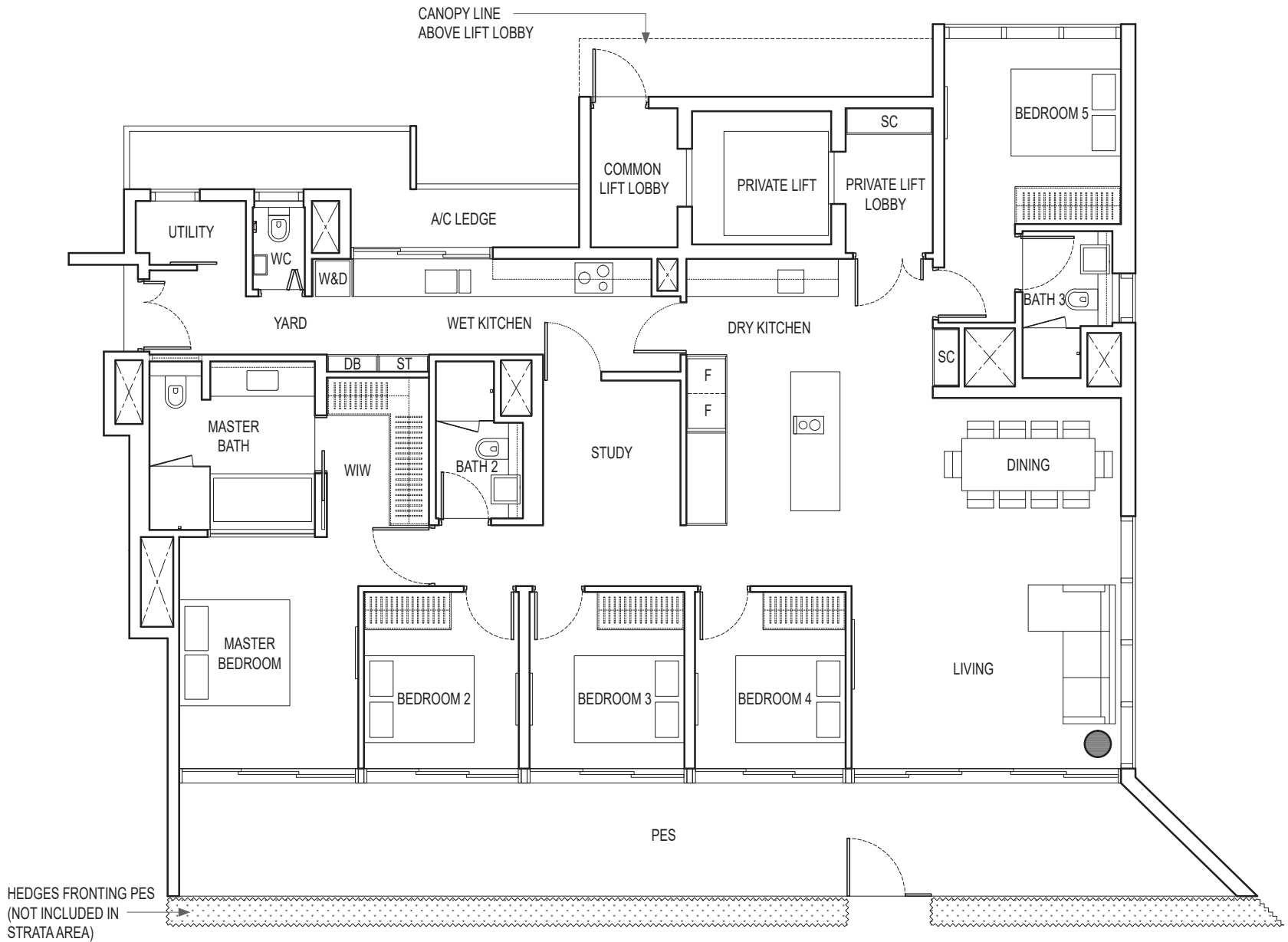
KEYPLAN IS NOT DRAWN TO SCALE

5-BEDROOM + STUDY

TYPE E3 PES

216 sq m / 2325 sq ft

BLK 18A : #01-27



Area includes air-con (A/C) ledge, balcony and strata void area where applicable. Please refer to the key plan for orientation. The plans are subject to change as may be approved by relevant authorities. All floor plans are approximate measurements only and are subject to government re-survey. The balcony shall not be enclosed unless with the approved balcony screen.

DB: Distribution Box SC: Shoe Cabinet ST: Storage WIW: Walk-in-Wardrobe / Closet WD: Integrated Washer Dryer
 W&D: Washer and Dryer F: Fridge WC: Water Closet PES: Private Enclosed Space

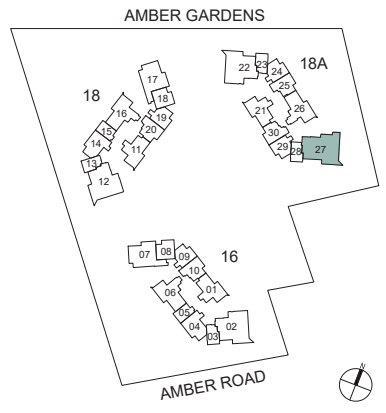
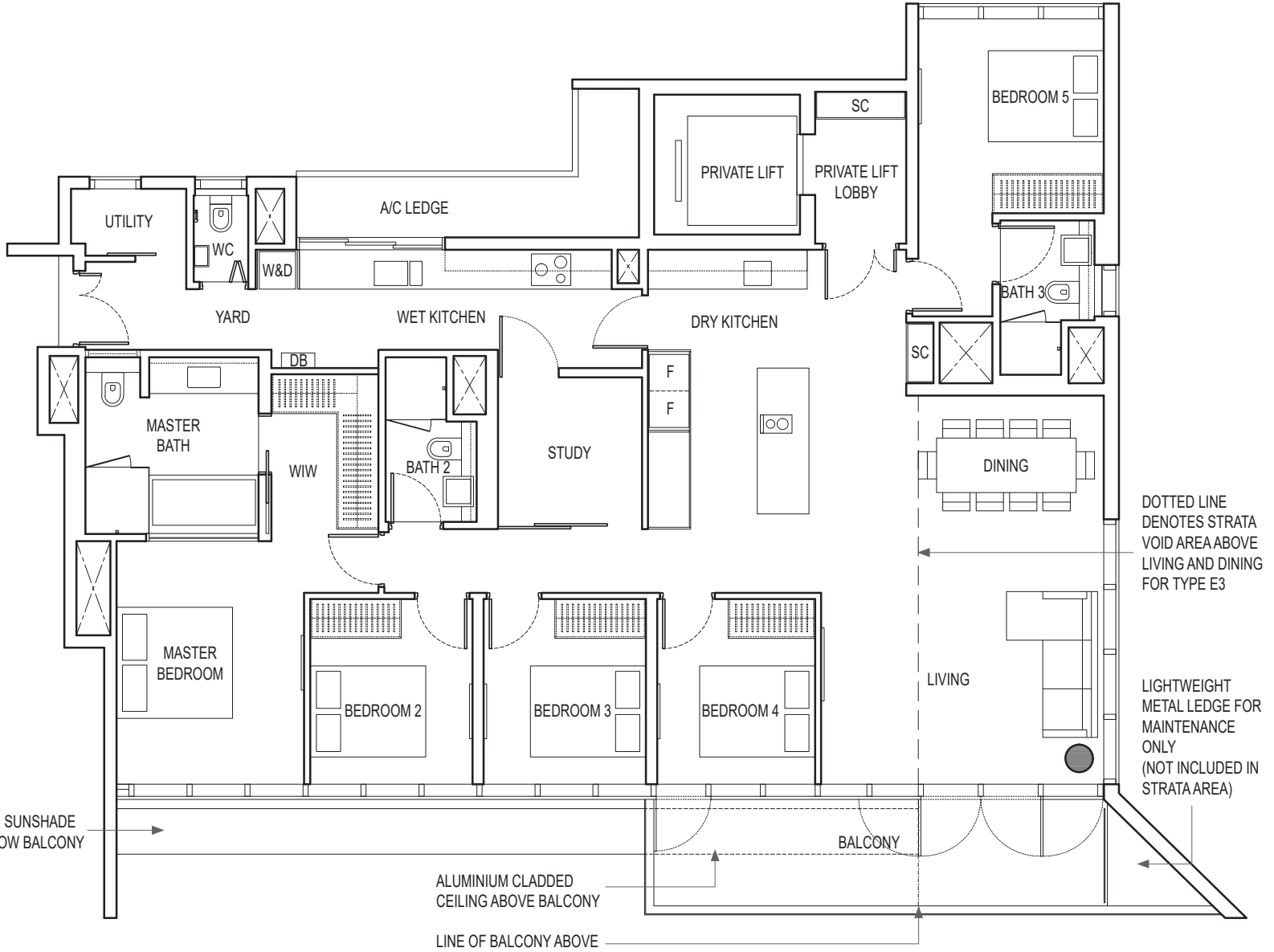
KEYPLAN IS NOT DRAWN TO SCALE

5-BEDROOM + STUDY

TYPE E3

217 sq m / 2336 sq ft
 (Inclusive of strata void area of
 22 sq m / 237 sq ft above Living and Dining)

BLK 18A : #02-27, #04-27, #06-27, #08-27, #10-27,
 #12-27, #14-27, #16-27, #18-27



KEYPLAN IS NOT DRAWN TO SCALE

0 1m 2m 5m

Area includes air-con (A/C) ledge, balcony and strata void area where applicable. Please refer to the key plan for orientation. The plans are subject to change as may be approved by relevant authorities. All floor plans are approximate measurements only and are subject to government re-survey. The balcony shall not be enclosed unless with the approved balcony screen.

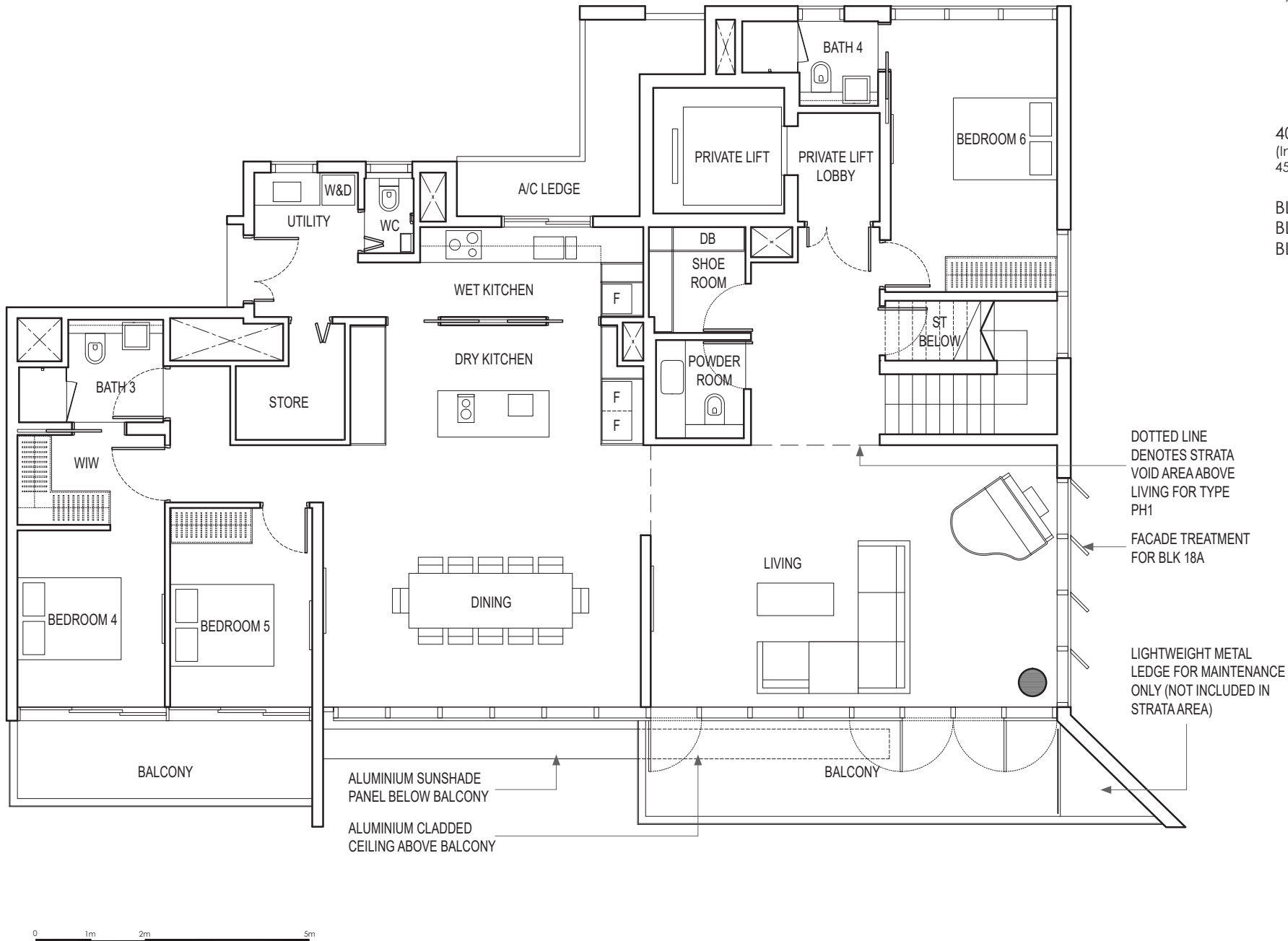
DB: Distribution Box SC: Shoe Cabinet ST: Storage WIW: Walk-in-Wardrobe / Closet WD: Integrated Washer Dryer
 W&D: Washer and Dryer F: Fridge WC: Water Closet PES: Private Enclosed Space

PENTHOUSE (6-BEDROOM)

TYPE PH1 (lower)

408 sq m / 4392 sq ft
 (Inclusive of strata void area of
 45 sq m / 484 sq ft above Living)

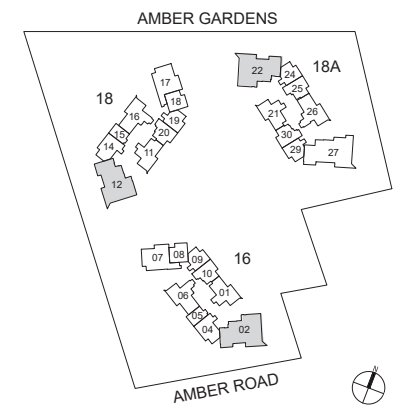
BLK 16 : #20-02
 BLK 18 : #20-12
 BLK 18A : #20-22



DOTTED LINE
 DENOTES STRATA
 VOID AREA ABOVE
 LIVING FOR TYPE
 PH1

FACADE TREATMENT
 FOR BLK 18A

LIGHTWEIGHT METAL
 LEDGE FOR MAINTENANCE
 ONLY (NOT INCLUDED IN
 STRATA AREA)



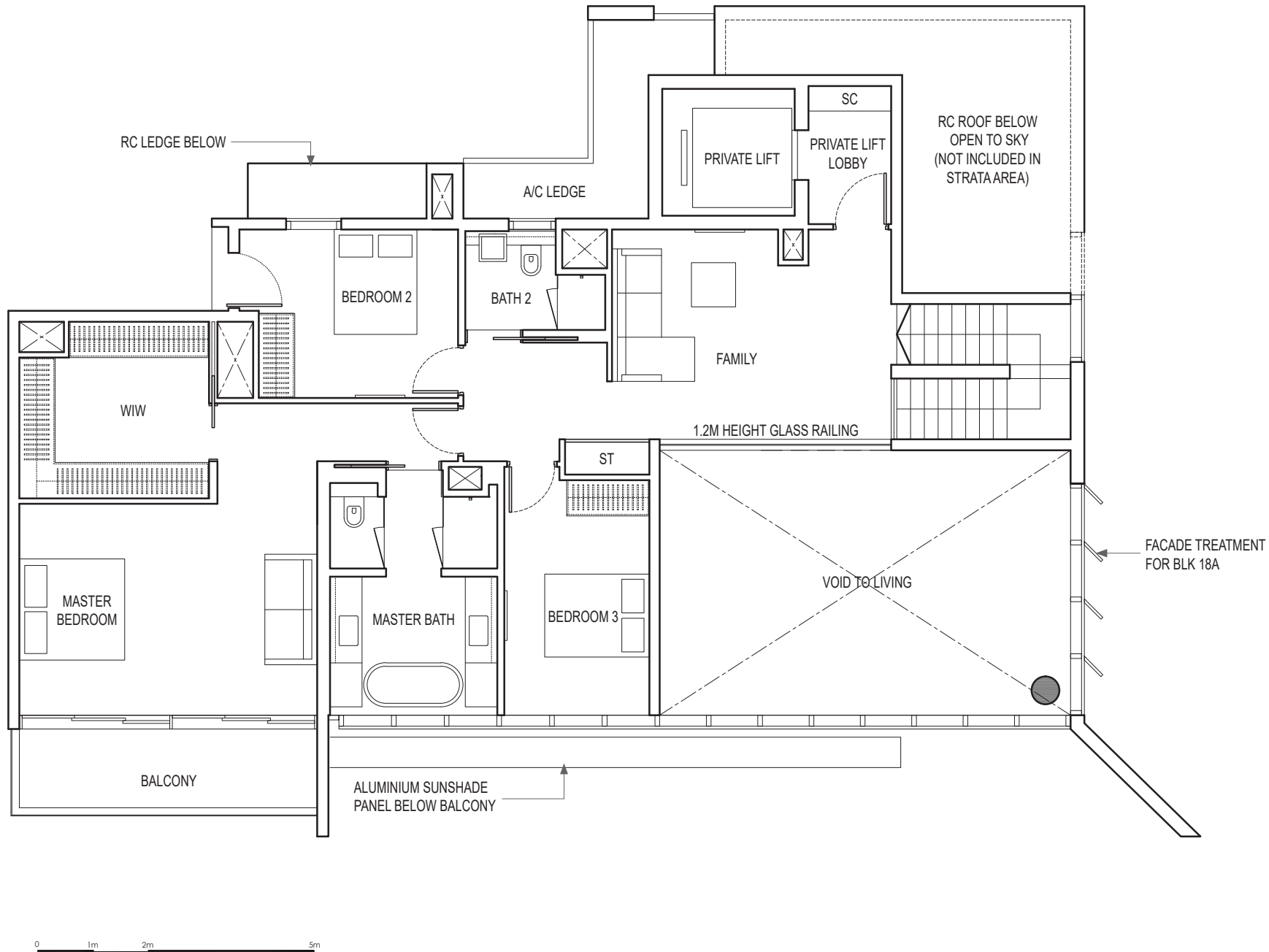
KEYPLAN IS NOT DRAWN TO SCALE

Area includes air-con (A/C) ledge, balcony and strata void area where applicable. Please refer to the key plan for orientation. The plans are subject to change as may be approved by relevant authorities. All floor plans are approximate measurements only and are subject to government re-survey. The balcony shall not be enclosed unless with the approved balcony screen.

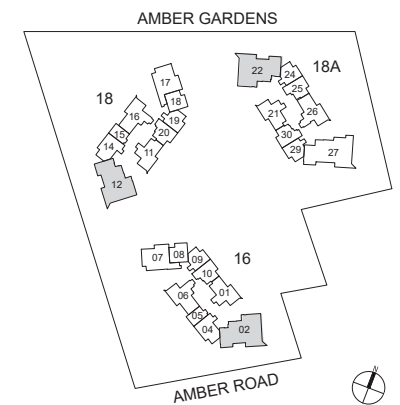
DB: Distribution Box SC: Shoe Cabinet ST: Storage WIW: Walk-in-Wardrobe / Closet WD: Integrated Washer Dryer
 W&D: Washer and Dryer F: Fridge WC: Water Closet PES: Private Enclosed Space

PENTHOUSE (6-BEDROOM)

TYPE PH1 (upper)



BLK 16 : #20-02
 BLK 18 : #20-12
 BLK 18A : #20-22



Area includes air-con (A/C) ledge, balcony and strata void area where applicable. Please refer to the key plan for orientation. The plans are subject to change as may be approved by relevant authorities. All floor plans are approximate measurements only and are subject to government re-survey. The balcony shall not be enclosed unless with the approved balcony screen.

DB: Distribution Box SC: Shoe Cabinet ST: Storage WIW: Walk-in-Wardrobe / Closet WD: Integrated Washer Dryer
 W&D: Washer and Dryer F: Fridge WC: Water Closet PES: Private Enclosed Space

KEYPLAN IS NOT DRAWN TO SCALE

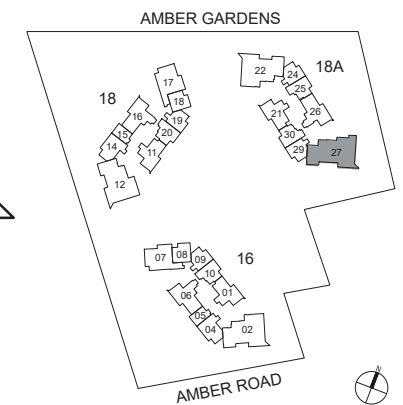
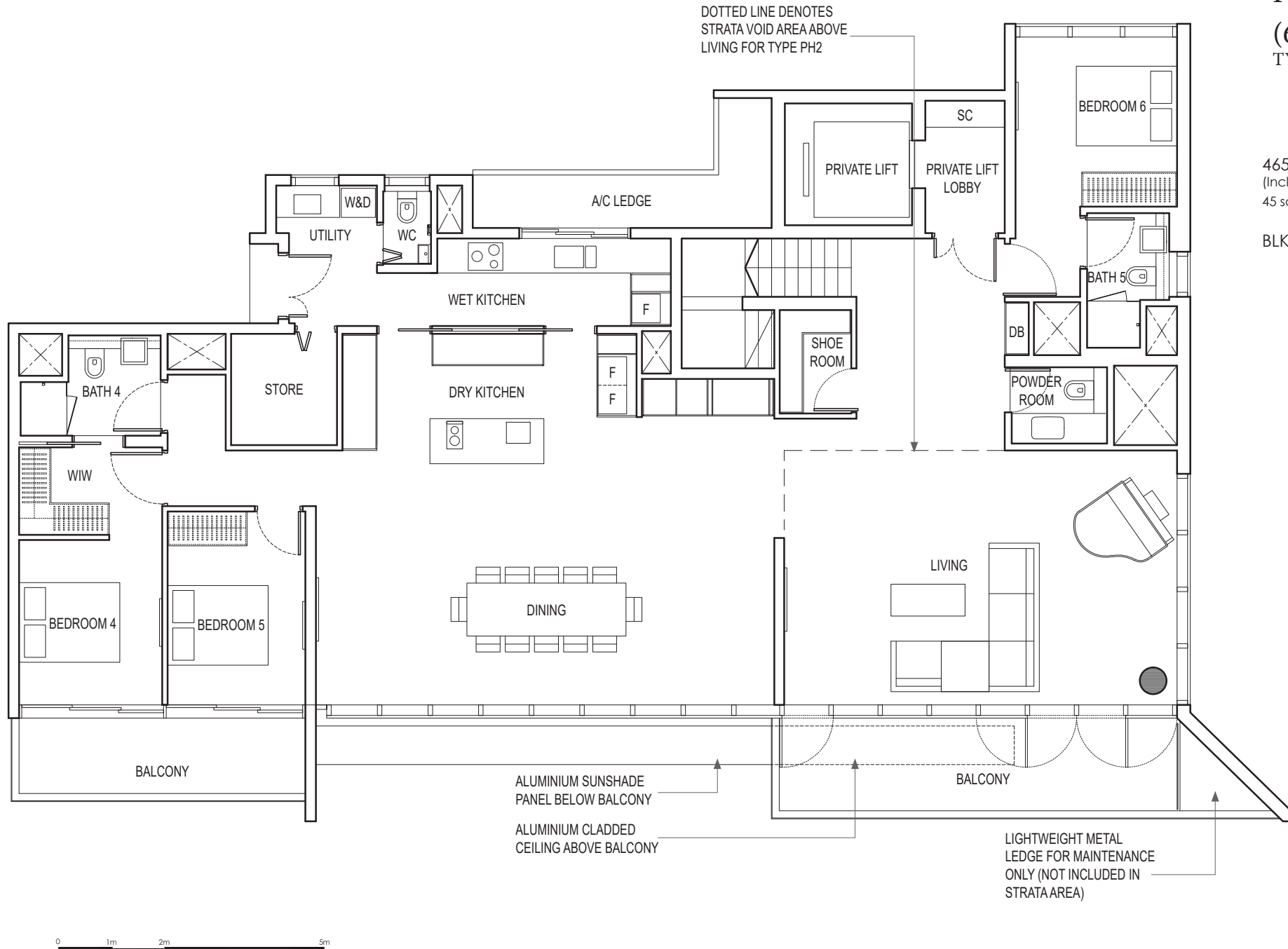
PENTHOUSE

(6-BEDROOM + STUDY)

TYPE PH2 (lower)

465 sq m / 5005 sq ft
(Inclusive of strata void area of
45 sq m / 484 sq ft above Living)

BLK 18A : #20-27



Area includes air-con (A/C) ledge, balcony and strata void area where applicable. Please refer to the key plan for orientation. The plans are subject to change as may be approved by relevant authorities. All floor plans are approximate measurements only and are subject to government re-survey. The balcony shall not be enclosed unless with the approved balcony screen.

DB: Distribution Box SC: Shoe Cabinet ST: Storage W/W: Walk-in-Wardrobe / Closet W/D: Integrated Washer Dryer
W&D: Washer and Dryer F: Fridge WC: Water Closet PES: Private Enclosed Space

KEYPLAN IS NOT DRAWN TO SCALE

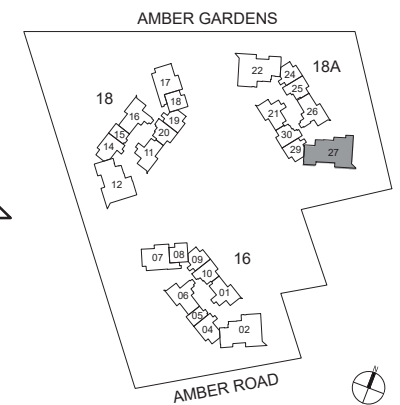
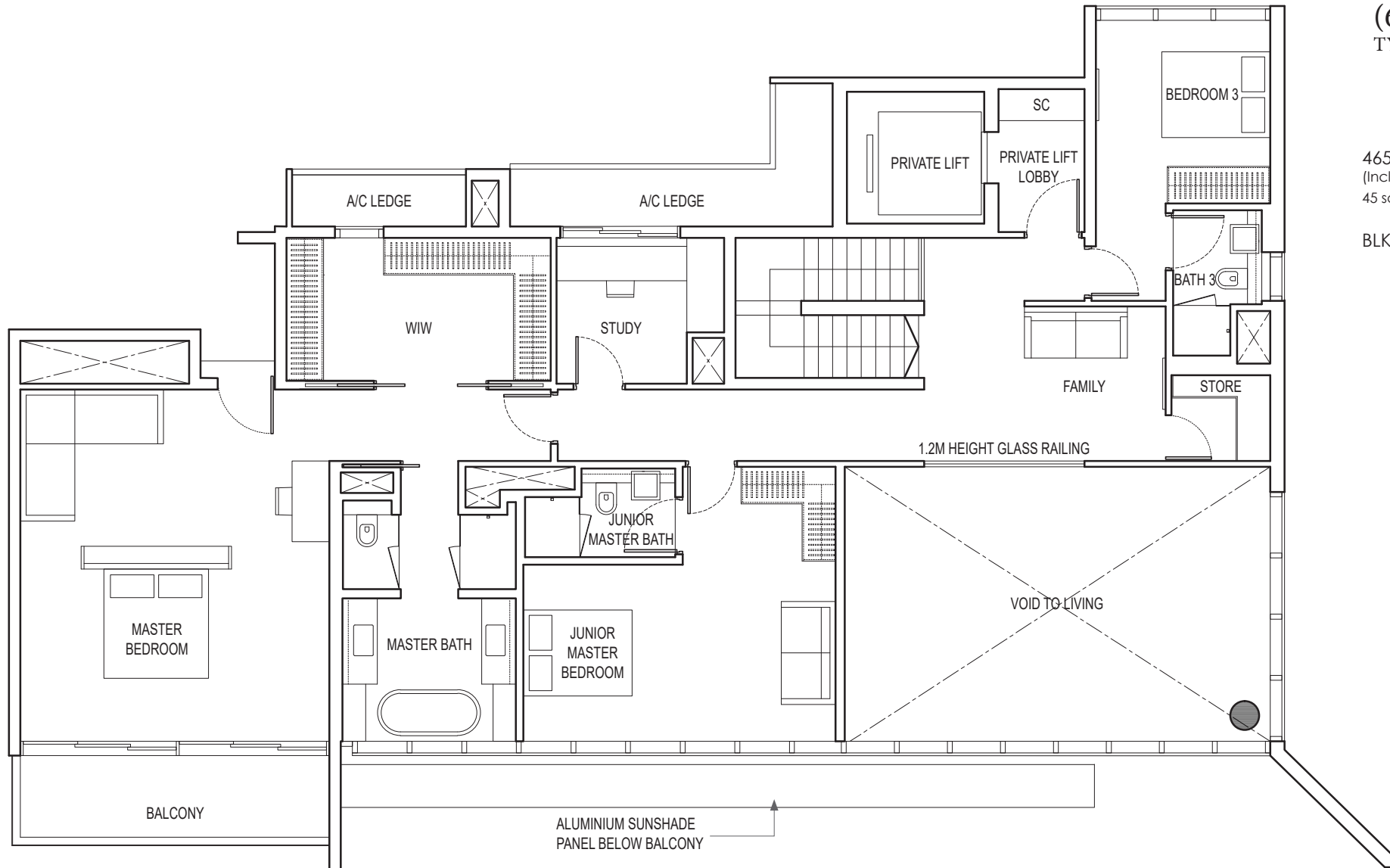
PENTHOUSE

(6-BEDROOM + STUDY)

TYPE PH2 (upper)

465 sq m / 5005 sq ft
 (Inclusive of strata void area of
 45 sq m / 484 sq ft above Living)

BLK 18A : #20-27



0 1m 2m 5m

Area includes air-con (A/C) ledge, balcony and strata void area where applicable. Please refer to the key plan for orientation. The plans are subject to change as may be approved by relevant authorities. All floor plans are approximate measurements only and are subject to government re-survey. The balcony shall not be enclosed unless with the approved balcony screen.

DB: Distribution Box SC: Shoe Cabinet ST: Storage WIW: Walk-in-Wardrobe / Closet WD: Integrated Washer Dryer
 W&D: Washer and Dryer F: Fridge WC: Water Closet PES: Private Enclosed Space

KEYPLAN IS NOT DRAWN TO SCALE